

Active Recombinant Human GPC5 protein, His-tagged

Cat. No. GPC5-3332H Lot. No. (See product label)

SPECIFICATION

Product Overview	Active Recombinant Human GPC5 protein(NP_004457.1) (Met 1-Thr 554) was expressed in Insect Cells, fused with a polyhistidine tag at the C-terminus.
Species	Human
Source	Insect Cells
ProteinLength	1-554 aa
Form	Lyophilized from sterile 50mM Tris, 100mM NaCl, pH 8.0.
Bio-activity	Measured by its binding ability in a functional ELISA. Immobilized human GPC5 at 5 µg/ml (100 µl/well) can bind human bFGF with a linear ranger of 0.156-2.5 ng/ml.
Molecular Mass	The secreted recombinant human GPC5 consists of 540 amino acids and predicts a molecular mass of 60.5 kDa as estimated in SDS-PAGE under reducing conditions.
Endotoxin	Less than 1 EU per µg by the LAL method.
Purity	> 92 % as determined by SDS-PAGE
Storage	Store it under sterile conditions at -20°C to -80°C upon receiving. Recommend to aliquot the protein into smaller quantities for optimal storage. Avoid repeated freeze-thaw cycles.

 Tel: 1-631-559-9269 1-516-512-3133

 Email: info@creative-biomart.com  Fax: 1-631-938-8127

 45-1 Ramsey Road, Shirley, NY 11967, USA



Reconstitution It is recommended that sterile water be added to the vial to prepare a stock solution of 0.2 ug/ul. Centrifuge the vial at 4°C before opening to recover the entire contents.

GENE INFORMATION

Gene Name GPC5 glypican 5 [Homo sapiens]

Official Symbol GPC5

Synonyms GPC5; glypican 5; glypican-5; glypican proteoglycan 5; bA93M14.1;

Gene ID 2262

mRNA Refseq NM_004466

Protein Refseq NP_004457

MIM 602446

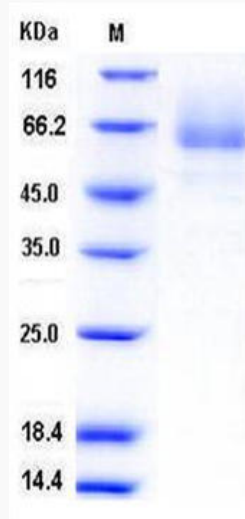
UniProt ID P78333

 Tel: 1-631-559-9269 1-516-512-3133

 Email: info@creative-biomart.com  Fax: 1-631-938-8127

 45-1 Ramsey Road, Shirley, NY 11967, USA

SDS-PAGE



 Tel: 1-631-559-9269 1-516-512-3133

 Email: info@creative-biomart.com  Fax: 1-631-938-8127

 45-1 Ramsey Road, Shirley, NY 11967, USA