

Recombinant Human GPC5 Protein, GST-tagged

Cat. No. GPC5-5149H Lot. No. (See product label)

SPECIFICATION

Product Overview	Human GPC5 full-length ORF (AAH39730, 1 a.a. - 572 a.a.) recombinant protein with GST-tag at N-terminal.
Species	Human
Source	Wheat Germ
Description	Cell surface heparan sulfate proteoglycans are composed of a membrane-associated protein core substituted with a variable number of heparan sulfate chains. Members of the glypican-related integral membrane proteoglycan family (GRIPS) contain a core protein anchored to the cytoplasmic membrane via a glycosyl phosphatidylinositol linkage. These proteins may play a role in the control of cell division and growth regulation. [provided by RefSeq
Molecular Mass	88.66 kDa
AA Sequence	MDAQTWPVGFRCLLLLALVGSARSEGVQTCEEVRKLFQWRLLGAVRGLPDSPRAG PDLQVCISKKPTCCTRKMEERYQIAARQDMQQFLQTSSSTLKFLISRNAAAFQETLE TLIKQAENYTSILFCSTYRNMALEAAASVQEFFTDVGLYLFGADVNPPEFVNRFFDSL FPLVYNHLINPGVTDSSLEYSECIRMARRDVSPFGNIPQRVMGQMGRSLLPSRTFLQ ALNLGIEVINTTDYLHFSKECSRALLKMQYCPHCQGLALTKPCMGYCLNVMRGCLAH MAELNPHWHAYIRSLEELSDAMHGTYDIGHVLLNFHLLVNDVLAHLNGQKLLEQV NRICGRPVRTPTQSPRCSFDQSKEKHGMKTTTRNSEETLANRRKEFINSLRLYRSFY GGLADQLCANELAAADGLPCWNGEDIVKSYTQRVVGNNGIKAQSGNPEVKVKGIDPV

 Tel: 1-631-559-9269 1-516-512-3133

 Email: info@creative-biomart.com  Fax: 1-631-938-8127

 45-1 Ramsey Road, Shirley, NY 11967, USA

INQIIDKCLKHVVQLLQGRSPKPKDWELLQLGSGGGMVEQVSGDCDDEDGCGGSGS
 GEVKRTLKITDWMPDDMNFSDVKQIHQTDTGSTLDTTGAGCAVATESMTFTLISVVM
 LLPGIW

Applications	Enzyme-linked Immunoabsorbent Assay Western Blot (Recombinant protein) Antibody Production Protein Array
Notes	Best use within three months from the date of receipt of this protein.
Storage	Store at -80 centigrade. Aliquot to avoid repeated freezing and thawing.
Storage Buffer	50 mM Tris-HCl, 10 mM reduced Glutathione, pH=8.0 in the elution buffer.

GENE INFORMATION

Gene Name	GPC5 glypican 5 [Homo sapiens]
Official Symbol	GPC5
Synonyms	GPC5; glypican 5; glypican-5; glypican proteoglycan 5; bA93M14.1;
Gene ID	2262
mRNA Refseq	NM_004466
Protein Refseq	NP_004457
MIM	602446

 Tel: 1-631-559-9269 1-516-512-3133

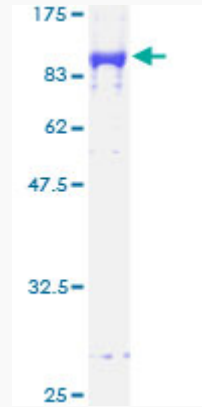
 Email: info@creative-biomart.com  Fax: 1-631-938-8127

 45-1 Ramsey Road, Shirley, NY 11967, USA

UniProt ID

P78333

Quality Control
Testing



12.5% SDS-PAGE Stained with Coomassie Blue.

 Tel: 1-631-559-9269 1-516-512-3133

 Email: info@creative-biomart.com  Fax: 1-631-938-8127

 45-1 Ramsey Road, Shirley, NY 11967, USA