

Recombinant Human GPC6 Protein (24-529 aa), His-tagged

Cat. No. GPC6-1403H Lot. No. (See product label)

SPECIFICATION

Product Overview	Recombinant Human GPC6 Protein (24-529 aa) is produced by Yeast expression system. This protein is fused with a 6xHis tag at the N-terminal. Research Area: Signal Transduction. Protein Description: Full Length of Mature Protein.
Species	Human
Source	Yeast
ProteinLength	24-529 aa
Description	Cell surface proteoglycan that bears heparan sulfate. Putative cell surface coreceptor for growth factors, Extracellular domain matrix proteins, proteases and anti-proteases . Enhances migration and invasion of cancer cells through WNT5A signaling. ¹ Publication
Form	Tris-based buffer,50% glycerol
Molecular Mass	59.6 kDa
AA Sequence	DVKARSCGEVRQAYGAKGFSLADIPYQEIAGEHLRICPQEYTCCTTEMEDKLSQQS KLEFENLVEETSHFVRTTFVSRHKKFDEFFRELLENAEKSLNDMFVRTYGMLYMQN SEVFQDLFTELKRYTGGNVNLEMLNDFWARLLERMFQLINPQYHFSEDYLECVS KYTDQLKPFQDVPRKLIQVTRAFIAARTFVQGLTVGREVANRVSKVSPTPGCIRAL MKMLYCPYCRGLPTVRPCNNYCLNVMKGCLANQADLDTEWNLFDAMLLVAERLE GPFNIESVMDPIDVKISEAIMNMQENSMQVSAKVFQCGGQPKPAPALRSARSAPEN

 Tel: 1-631-559-9269 1-516-512-3133

 Email: info@creative-biomart.com  Fax: 1-631-938-8127

 45-1 Ramsey Road, Shirley, NY 11967, USA

FNTRFRPYNPEERPTTAAGTSLDRLVTDIKEKCLKLSKKVWSALPYTICKDESVTAGTS
 NEEECWNGHSKARYLPEIMNDGLTNQINNPEVDVDITRPDTFIRQQIMALRVMTNKL
 KNAYNGNDVNFQDTSDESSGSGSGSGCMDDVCPTEFEFVTTEAPAVDPDRREVDS

Purity > 90% as determined by SDS-PAGE.

Notes Repeated freezing and thawing is not recommended. Store working aliquots at 4 centigrade for up to one week.

Storage The shelf life is related to many factors, storage state, buffer ingredients, storage temperature and the stability of the protein itself. Generally, the shelf life of liquid form is 6 months at -20 centigrade/-80 centigrade. The shelf life of lyophilized form is 12 months at -20 centigrade/-80 centigrade.

Concentration A hardcopy of COA with reconstitution instruction is sent along with the products.

GENE INFORMATION

Gene Name [GPC6 glypican 6 \[Homo sapiens \]](#)

Official Symbol [GPC6](#)

Synonyms GPC6; glypican 6; glypican-6; OMIMD1; MGC126288;

Gene ID [10082](#)

mRNA Refseq [NM_005708](#)

Protein Refseq [NP_005699](#)

MIM [604404](#)

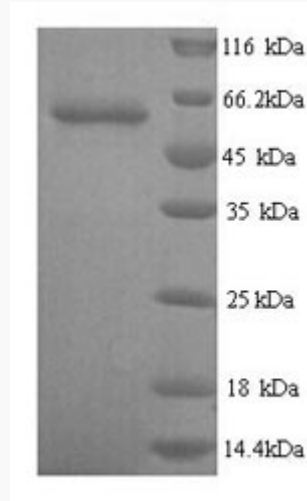
 Tel: 1-631-559-9269 1-516-512-3133

 Email: info@creative-biomart.com  Fax: 1-631-938-8127

 45-1 Ramsey Road, Shirley, NY 11967, USA

UniProt ID

Q9Y625



(Tris-Glycine gel) Discontinuous SDS-PAGE (reduced) with 5% enrichment gel and 15% separation gel.

 Tel: 1-631-559-9269 1-516-512-3133

 Email: info@creative-biomart.com  Fax: 1-631-938-8127

 45-1 Ramsey Road, Shirley, NY 11967, USA