

Recombinant Full Length Human GPCPD1 Protein, C-Flag-tagged

Cat. No. GPCPD1-2185HFL **Lot. No.** (See product label)

SPECIFICATION

Product Overview	Recombinant Full Length Human GPCPD1 Protein, fused to Flag-tag at C-terminus, was expressed in Mammalian cells.
Species	Human
Source	Mammalian Cells
Description	Predicted to enable glycerophosphocholine phosphodiesterase activity. Predicted to be involved in glycerophospholipid catabolic process. Predicted to act upstream of or within skeletal muscle tissue development. Predicted to be located in cytosol.
Form	25 mM Tris HCl, pH 7.3, 100 mM glycine, 10% glycerol.
Molecular Mass	75.9 kDa
AA Sequence	<p> MTPSQVAFEIRGTLTPGEVFAICGSCDALGNWNPQNAVALLPENDTGESMLWKATIV LSRGVSVQYRYFK GYFLEPKTIGGPCQVIVHKWETHLQPRSITPLESEIIIDDGQFGIH NGVETLD SGWLT CQTEIRLRLHYS EKPPVSITKKKLLKSRFRV KLTLEGLEEDDDDR VSPTVLHKMSNSLEISLISDNEFKCRHSQPECGYGLQ PDRWTEYSIQTMEPDNLELI FDFFEEDLSEHV VQGDALPGHVGTACLLSSTIAESGKSAGILTLPIMSRN SRKTIGKV RVDYIIIKPLPGYSCDMKSSFSKYWKPRIPLDVGHRGAGNSTTTAQLAKVQENTIASL RNAA SHGAAFVEFDVHLSKDFVPVYHDLTCCLTMKKKFDADPVELFEIPVKELTFD QLQLLKLTHVTALKSKD RKESVVQEENSFSENQPFPSLKMVLESLPEDVGFNIEIKWI CQQRDGMWDGNLSTYFDMNLFLDIILKTV LENS GKRRIVFSSFDADICTMVRQKQN </p>

 Tel: 1-631-559-9269 1-516-512-3133

 Email: info@creative-biomart.com  Fax: 1-631-938-8127

 45-1 Ramsey Road, Shirley, NY 11967, USA

KYPILFLTQGKSEIYPELMDLRSRTTPIAMSFAQFENLLGINV HTEDLLRNPSYIQEAK
 AKGLVIFCWGDDTNDPENRRKLELGVNGLIYDRIYDWMPEQPNIFQVEQLERL KQ
 ELPELKSCLCPTVSRFVPSSLCGESDIHVDANGIDNVENA TRTRPLEQKLISEEDLAA
 NDILDYKDDDDKV

Purity > 80% as determined by SDS-PAGE and Coomassie blue staining.

Stability Stable for 12 months from the date of receipt of the product under proper storage and handling conditions. Avoid repeated freeze-thaw cycles.

Storage Store at -80 centigrade.

Concentration >50 ug/mL as determined by microplate BCA method.

Preparation Recombinant protein was captured through anti-DDK affinity column followed by conventional chromatography steps.

Full Length Full L.

GENE INFORMATION

Gene Name [GPCPD1 glycerophosphocholine phosphodiesterase 1 \[Homo sapiens \(human\) \]](#)

Official Symbol [GPCPD1](#)

Synonyms EDI3; GDE5; GDPD6; PREI4

Gene ID [56261](#)

mRNA Refseq [NM_019593.5](#)

 Tel: 1-631-559-9269 1-516-512-3133

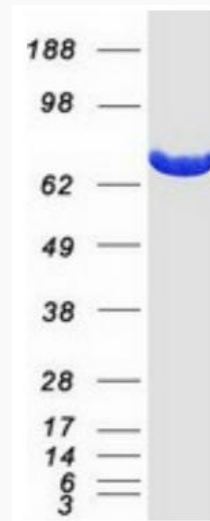
 Email: info@creative-biomart.com  Fax: 1-631-938-8127

 45-1 Ramsey Road, Shirley, NY 11967, USA

Protein Refseq NP_062539.1

MIM 614124

UniProt ID Q9NPB8



Coomassie blue staining of purified GPCPD1 protein.

Tel: 1-631-559-9269 1-516-512-3133

Email: info@creative-biomart.com Fax: 1-631-938-8127

45-1 Ramsey Road, Shirley, NY 11967, USA