

Recombinant Human GPCPD1 Protein, Myc/DDK-tagged, C13 and N15-labeled

Cat. No. GPCPD1-5336H Lot. No. (See product label)

SPECIFICATION

Product Overview	GPCPD1 MS Standard C13 and N15-labeled recombinant protein (NP_062539) with a C-terminal MYC/DDK tag, was expressed in HEK293 cells.
Species	Human
Source	HEK293
Description	GPCPD1 (Glycerophosphocholine Phosphodiesterase 1) is a Protein Coding gene. Diseases associated with GPCPD1 include Dental Anomalies And Short Stature and Avoidant Personality Disorder. Among its related pathways are Phospholipase D signaling pathway and Metabolism. Gene Ontology (GO) annotations related to this gene include carbohydrate binding and starch binding.
Molecular Mass	76 kDa
AA Sequence	<p>MTPSQVAFEIRGTLTPGEVFAICGSCDALGNWNPQNAVALLPENDTGESMLWKATIV LSRGVSQYRYFKGYFLEPKTIGGPCQVIVHKWETHLQPRSITPLESEIIIDDGQFGIH NGVETLD SGWLT CQTEIRLRLHYSEKPPVSITKKLKKSRFRV KLTLEGLEEDDDDR VSPTVLHKMSNSLEISLISDNEFKCRHSQPECGYGLQPDRWTEYSIQTM EPDNLELIF DFFEEDLSEHV VQGDALPGHVGTACLLSSTIAESGKSAGIL TLPIMSRNSRKTIGKVR VDYIIKPLPGYSCDMKSSFSKYWKPRIPLDVGH RGAGNSTTTAQLAKVQENTIASLR NAASHGAAFVEFDVHLSKDFVPVYHDLTCC LTMKKKFDADPVELFEIPVKELTFDQ LQLLKLTHVTALKSKDRKESV VQEENSFSENQPFPSLKMVLESLPEDVGFNIEIKWIC</p>

Tel: 1-631-559-9269 1-516-512-3133

Email: info@creative-biomart.com Fax: 1-631-938-8127

45-1 Ramsey Road, Shirley, NY 11967, USA

QQRDGMWDGNLSTYFDMNLFLLDIILKTVLENSGKRRIVFSSFDADICTMVRQKQNKY
 PILFLTQGKSEIYPELMDLRSRTTPIAMSFQFENLLGINVHTEDLLRNPSYIQEAKAK
 GLVIFCWGDDTNDPENRRKLELGVNGLIYDRIYDWMPEQPNIQVEQLERLQKQELP
 ELKSCLCPTVSRFVPSSLCGESDIHVDANGIDNVENATRTRPLEQKLISEEDLAANDIL
 DYKDDDDKV

Purity > 80% as determined by SDS-PAGE and Coomassie blue staining

Stability Stable for 3 months from receipt of products under proper storage and handling conditions.

Storage Store at -80 centigrade. Avoid repeated freeze-thaw cycles.

Concentration 50 µg/mL as determined by BCA

Storage Buffer 100 mM glycine, 25 mM Tris-HCl, pH 7.3.

GENE INFORMATION

Gene Name [GPCPD1 glycerophosphocholine phosphodiesterase 1 \[Homo sapiens \(human\) \]](#)

Official Symbol [GPCPD1](#)

Synonyms GPCPD1; glycerophosphocholine phosphodiesterase GDE1 homolog (S. cerevisiae); glycerophosphocholine phosphodiesterase GPCPD1; GDE5; GDPD6; KIAA1434; preimplantation protein 4; glycerophosphodiester phosphodiesterase 5; putative glycerophosphodiester phosphodiesterase 5; putative glycerophosphocholine phosphodiesterase GPCPD1; PREI4; RP5-1022P6.2; FLJ11085; MGC26147;

Gene ID [56261](#)

 Tel: 1-631-559-9269 1-516-512-3133

 Email: info@creative-biomart.com  Fax: 1-631-938-8127

 45-1 Ramsey Road, Shirley, NY 11967, USA

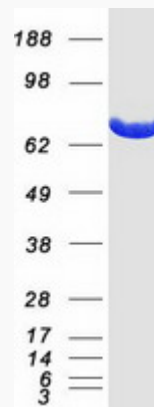
mRNA Refseq [NM_019593](#)

Protein Refseq [NP_062539](#)

MIM [614124](#)

UniProt ID [Q9NPB8](#)

SDS-PAGE



 Tel: 1-631-559-9269 1-516-512-3133

 Email: info@creative-biomart.com  Fax: 1-631-938-8127

 45-1 Ramsey Road, Shirley, NY 11967, USA