

Recombinant Human GPD1 Protein, Myc/DDK-tagged, C13 and N15-labeled

Cat. No. GPD1-2440H **Lot. No.** (See product label)

SPECIFICATION

Product Overview	GPD1 MS Standard C13 and N15-labeled recombinant protein (NP_005267) with a C-terminal MYC/DDK tag, was expressed in HEK293 cells.
Species	Human
Source	HEK293
Description	<p>This gene encodes a member of the NAD-dependent glycerol-3-phosphate dehydrogenase family. The encoded protein plays a critical role in carbohydrate and lipid metabolism by catalyzing the reversible conversion of dihydroxyacetone phosphate (DHAP) and reduced nicotinic adenine dinucleotide (NADH) to glycerol-3-phosphate (G3P) and NAD⁺. The encoded cytosolic protein and mitochondrial glycerol-3-phosphate dehydrogenase also form a glycerol phosphate shuttle that facilitates the transfer of reducing equivalents from the cytosol to mitochondria. Mutations in this gene are a cause of transient infantile hypertriglyceridemia. Alternatively spliced transcript variants encoding multiple isoforms have been observed for this gene.</p>
Molecular Mass	37.6 kDa
AA Sequence	<p>MASKKVCIVGSGNWGSAIAKIVGGNAAQLAQFDPRVTMWVFEEDIGGKKLTEIINTQ HENVKYLPGHKLPPNVVAVPDVVQAAEDADILIFVVPHQFIGKICDQLKGHLKANATG ISLIKGVDEGPNGLKLISEVIGERLGIPMSVLMGANIASEVADEKFCETTIGCKDPAQG</p>

 Tel: 1-631-559-9269 1-516-512-3133

 Email: info@creative-biomart.com  Fax: 1-631-938-8127

 45-1 Ramsey Road, Shirley, NY 11967, USA

QLLKELMQTPNFRITVVQEVDTVEICGALKNVVAVGAGFCDGLGFGDNTKAAVIRLG
 LMEMIAFAKLFCSGPVSSATFLESCGVADLITTCYGGRNRKVAEAFARTGKSIEQLEK
 ELLNGQKLQGPETARELYSILQHKGLVDKFPLFMAVYKVCYEGQPVGFEFIHCLQNHP
 EHMTRTRPLEQKLISEEDLAANDILDYKDDDDKV

Purity > 80% as determined by SDS-PAGE and Coomassie blue staining

Stability Stable for 3 months from receipt of products under proper storage and handling conditions.

Storage Store at -80 centigrade. Avoid repeated freeze-thaw cycles.

Concentration 50 µg/mL as determined by BCA

Storage Buffer 100 mM glycine, 25 mM Tris-HCl, pH 7.3.

GENE INFORMATION

Gene Name [GPD1 glycerol-3-phosphate dehydrogenase 1 \[Homo sapiens \(human\) \]](#)

Official Symbol [GPD1](#)

Synonyms GPD1; glycerol-3-phosphate dehydrogenase 1 (soluble); glycerol-3-phosphate dehydrogenase [NAD(+)], cytoplasmic; glycerophosphate dehydrogenase; glycerol-3-phosphate dehydrogenase [NAD+], cytoplasmic; GPD-C; HTGTI; GPDH-C; FLJ26652;

Gene ID [2819](#)

mRNA Refseq [NM_005276](#)

 Tel: 1-631-559-9269 1-516-512-3133

 Email: info@creative-biomart.com  Fax: 1-631-938-8127

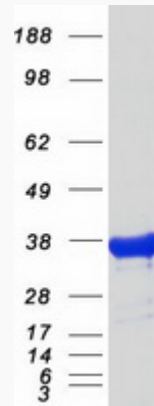
 45-1 Ramsey Road, Shirley, NY 11967, USA

Protein Refseq NP_005267

MIM 138420

UniProt ID P21695

SDS-PAGE



 Tel: 1-631-559-9269 1-516-512-3133

 Email: info@creative-biomart.com  Fax: 1-631-938-8127

 45-1 Ramsey Road, Shirley, NY 11967, USA