

Recombinant Human GPD1L Protein, Myc/DDK-tagged, C13 and N15-labeled

Cat. No. GPD1L-2662H Lot. No. (See product label)

SPECIFICATION

Product Overview	GPD1L MS Standard C13 and N15-labeled recombinant protein (NP_055956) with a C-terminal MYC/DDK tag, was expressed in HEK293 cells.
Species	Human
Source	HEK293
Description	The protein encoded by this gene catalyzes the conversion of sn-glycerol 3-phosphate to glycerone phosphate. The encoded protein is found in the cytoplasm, associated with the plasma membrane, where it binds the sodium channel, voltage-gated, type V, alpha subunit (SCN5A). Defects in this gene are a cause of Brugada syndrome type 2 (BRS2) as well as sudden infant death syndrome (SIDS).
Molecular Mass	38.4 kDa
AA Sequence	<p>MAAAPLKVCIVGSGNWGSAVAKIIGNNVKKLQKFASTVKMWWFEETVNGRKLTDIIN NDHENVKYLPGHKLPENNVAMSNLSEAVQDADLLVFVIPHQFIHRICDEITGRVPKKA LGITLIKGIDEGPEGLKLISDIIREKMGIDISVLMGANIANEVAAEKFCETTIGSKVMENG LLFKELLQTPNFRITVVDDADTVELCGALKNIVAVGAGFCDGLRCGDNTKAAVIRLGL MEMIAFARIFCKGQVSTATFLESCGVADLITTCYGGRRNRVAAEFARTGKTIEELEKE MLNGQKLQGPQTSAEVYRILKQKGLLDKFPLFTAVYQICYESRPVQEMLSCLQSHPE HTTRTRPLEQKLISEEDLAANDILDYKDDDDKV</p>
Purity	> 80% as determined by SDS-PAGE and Coomassie blue staining

 Tel: 1-631-559-9269 1-516-512-3133

 Email: info@creative-biomart.com  Fax: 1-631-938-8127

 45-1 Ramsey Road, Shirley, NY 11967, USA

Stability	Stable for 3 months from receipt of products under proper storage and handling conditions.
Storage	Store at -80 centigrade. Avoid repeated freeze-thaw cycles.
Concentration	50 µg/mL as determined by BCA
Storage Buffer	100 mM glycine, 25 mM Tris-HCl, pH 7.3.

GENE INFORMATION

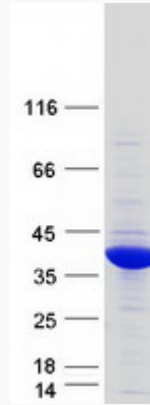
Gene Name	GPD1L glycerol-3-phosphate dehydrogenase 1-like [Homo sapiens (human)]
Official Symbol	GPD1L
Synonyms	GPD1L; glycerol-3-phosphate dehydrogenase 1-like; glycerol-3-phosphate dehydrogenase 1-like protein; KIAA0089; GPD1-L;
Gene ID	23171
mRNA Refseq	NM_015141
Protein Refseq	NP_055956
MIM	611778
UniProt ID	Q8N335

 Tel: 1-631-559-9269 1-516-512-3133

 Email: info@creative-biomart.com  Fax: 1-631-938-8127

 45-1 Ramsey Road, Shirley, NY 11967, USA

SDS-PAGE



 Tel: 1-631-559-9269 1-516-512-3133

 Email: info@creative-biomart.com  Fax: 1-631-938-8127

 45-1 Ramsey Road, Shirley, NY 11967, USA