

## Recombinant Human GPD1L Protein, GST-tagged

Cat. No. GPD1L-5152H Lot. No. (See product label)

### SPECIFICATION

<b>Product Overview</b>	Human GPD1L full-length ORF ( NP_055956.1, 1 a.a. - 351 a.a.) recombinant protein with GST-tag at N-terminal.
<b>Species</b>	Human
<b>Source</b>	Wheat Germ
<b>Description</b>	The protein encoded by this gene catalyzes the conversion of sn-glycerol 3-phosphate to glycerone phosphate. The encoded protein is found in the cytoplasm, associated with the plasma membrane, where it binds the sodium channel, voltage-gated, type V, alpha subunit (SCN5A). Defects in this gene are a cause of Brugada syndrome type 2 (BRS2) as well as sudden infant death syndrome (SIDS). [provided by RefSeq, Jul 2010]
<b>Molecular Mass</b>	64.8 kDa
<b>AA Sequence</b>	<p>MAAAPLKVCIVGSGNWGSAVAKIIGNNVKKLQKFASTVKMWWFEETVNGRKLTDIIN  NDHENVKYLPGHKLPENVVAMSNLSEAVQDADLLVFVIPHQFIHRICDEITGRVPKKA  LGITLIKGIDEGPEGLKLISDIIREKMGIDISVLMGANIANEVAAEKFCETTIGSKVMENG  LLFKELLQTPNFRITVVDDADTVELCGALKNIVAVGAGFCDGLRCGDNTKAAVIRLGL  MEMIAFARIFCKGQVSTATFLESCGVADLITTCYGGRRNRVAAEFARTGKTIEELEKE  MLNGQKLQGPQTSAEVYRILKQKGLLDKFPLFTAVYQICYESRPVQEMLSCLQSHPE  HT</p>
<b>Applications</b>	Enzyme-linked Immunoabsorbent Assay

 Tel: 1-631-559-9269 1-516-512-3133

 Email: [info@creative-biomart.com](mailto:info@creative-biomart.com)  Fax: 1-631-938-8127

 45-1 Ramsey Road, Shirley, NY 11967, USA

Western Blot (Recombinant protein)  
 Antibody Production  
 Protein Array

<b>Notes</b>	Best use within three months from the date of receipt of this protein.
<b>Storage</b>	Store at -80 centigrade. Aliquot to avoid repeated freezing and thawing.
<b>Storage Buffer</b>	50 mM Tris-HCl, 10 mM reduced Glutathione, pH=8.0 in the elution buffer.

## GENE INFORMATION

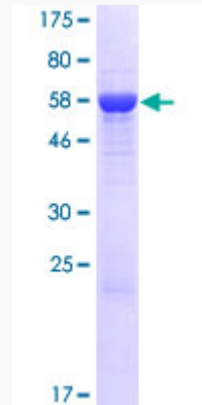
<b>Gene Name</b>	GPD1L glycerol-3-phosphate dehydrogenase 1-like [ Homo sapiens ]
<b>Official Symbol</b>	GPD1L
<b>Synonyms</b>	GPD1L; glycerol-3-phosphate dehydrogenase 1-like; glycerol-3-phosphate dehydrogenase 1-like protein; KIAA0089; GPD1-L;
<b>Gene ID</b>	23171
<b>mRNA Refseq</b>	NM_015141
<b>Protein Refseq</b>	NP_055956
<b>MIM</b>	611778
<b>UniProt ID</b>	Q8N335

 Tel: 1-631-559-9269 1-516-512-3133

 Email: [info@creative-biomart.com](mailto:info@creative-biomart.com)  Fax: 1-631-938-8127

 45-1 Ramsey Road, Shirley, NY 11967, USA

**Quality Control  
Testing**



12.5% SDS-PAGE Stained with Coomassie Blue.

 Tel: 1-631-559-9269 1-516-512-3133

 Email: [info@creative-biomart.com](mailto:info@creative-biomart.com)  Fax: 1-631-938-8127

 45-1 Ramsey Road, Shirley, NY 11967, USA