

# Recombinant Yeast(strain SC5314 / ATCC MYA-2876) GPD2 protein, His-tagged

**Cat. No.** GPD2-4533C    **Lot. No.** (See product label)

## SPECIFICATION

|                         |  |
|-------------------------|--|
| <b>Product Overview</b> | Recombinant Yeast(strain SC5314 / ATCC MYA-2876) GPD2 protein(Q59W33)(1-371aa), fused with C-terminal His tag, was expressed in Yeast.   |
| <b>Species</b>          | Yeast(strain SC5314 / ATCC MYA-2876)   |
| <b>Source</b>           | Yeast  |
| <b>ProteinLength</b>    | 1-371aa  |
| <b>Tag</b>              | C-His  |
| <b>Form</b>             | If the delivery form is liquid, the default storage buffer is Tris/PBS-based buffer, 5%-50% glycerol. If the delivery form is lyophilized powder, the buffer before lyophilization is Tris/PBS-based buffer, 6% Trehalose, pH 8.0. |
| <b>Molecular Mass</b>   | 42.3 kDa   |
| <b>Purity</b>           | Greater than 85% as determined by SDS-PAGE.  |
| <b>Storage</b>          | Store at -20°C/-80°C upon receipt, aliquoting is necessary for mutiple use. Avoid repeated freeze-thaw cycles.   |
| <b>Reconstitution</b>   | We recommend that this vial be briefly centrifuged prior to opening to bring the contents to the bottom. Please reconstitute protein in deionized sterile water to a   |

 Tel: 1-631-559-9269    1-516-512-3133

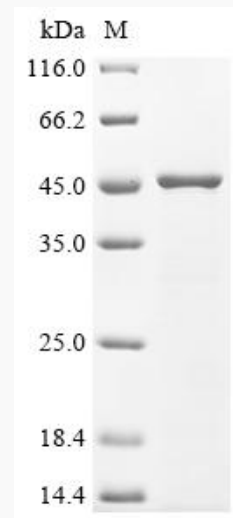
 Email: [info@creative-biomart.com](mailto:info@creative-biomart.com)     Fax: 1-631-938-8127

 45-1 Ramsey Road, Shirley, NY 11967, USA

concentration of 0.1-1.0 mg/mL. We recommend to add 5-50% of glycerol (final concentration) and aliquot for long-term storage at -20°C/-80°C.

**AA Sequence**

MTTSPYPIETPFKVCIVGSGNWGTAVAKLVAENCAEKPNIFQRDVKMWVFEEEEIEGR  
KLTEIINTEHENVKYLPEIKLPTNLVANPDIVDTVQDADLIVFNIPHQFLGRIVKQIEGKV  
KPTARAI SCLKGLDVSPEGCKLLSTSITDTLKIYCGVLSGANIANEVAKGNWSETSIAY  
TVPEDFRGAGKDIDPFILKEAFHRPYFHVRVIEDVVGASIAGALKNVIACSVGFVEGA  
GWGDNAAKAAIMRIGIKETIRFASYWELFKIKALSPNPKTFTEESAGVADLITTCSSG  
RNVKVARYMIKNNVDAFEAEKIVLKGQSSQGILTAKEVHELLTNFNLQDEFPLLEATY  
KVIYENGSVDDFPQLLEGDQ

**SDS-PAGE**

 Tel: 1-631-559-9269 1-516-512-3133

 Email: [info@creative-biomart.com](mailto:info@creative-biomart.com)  Fax: 1-631-938-8127

 45-1 Ramsey Road, Shirley, NY 11967, USA