

Recombinant Human GPD2 protein, His-tagged

Cat. No. GPD2-4535H Lot. No. (See product label)

SPECIFICATION

Product Overview	Recombinant Human GPD2 protein(P43304)(43-727aa), fused with N-terminal His tag, was expressed in E.coli.
Species	Human
Source	E.coli
ProteinLength	43-727aa
Form	If the delivery form is liquid, the default storage buffer is Tris/PBS-based buffer, 5%-50% glycerol. If the delivery form is lyophilized powder, the buffer before lyophilization is Tris/PBS-based buffer, 6% Trehalose, pH 8.0.
Molecular Mass	82.3 kDa
Purity	Greater than 90% as determined by SDS-PAGE.
Storage	Store at -20°C/-80°C upon receipt, aliquoting is necessary for mutiple use. Avoid repeated freeze-thaw cycles.
Reconstitution	We recommend that this vial be briefly centrifuged prior to opening to bring the contents to the bottom. Please reconstitute protein in deionized sterile water to a concentration of 0.1-1.0 mg/mL. We recommend to add 5-50% of glycerol (final concentration) and aliquot for long-term storage at -20°C/-80°C.

 Tel: 1-631-559-9269 1-516-512-3133

 Email: info@creative-biomart.com  Fax: 1-631-938-8127

 45-1 Ramsey Road, Shirley, NY 11967, USA



AA Sequence

ADCISEPVNREPPSREAQLLTLQNTSEFDILVIGGGATGSGCALDAVTRGLKTALVER
 DDFSSGTSSRSTKLIHGGVRYLQKAIMKLDIEQYRMVKEALHERANLLEIAPHL SAPL
 PIMLPVYKWWQLPYYWVGIKLYDLVAGSNCLKSSYVLSKSRALHFPM LQKDKLVG
 AIVYYDGGHNDARMNLAIALTAARYGAATANYMEVVSL LKKTDPQTGKVRVSGARC
 KDVL TGQEFDVRAKCVINATGPFTDSVRKMDDKAAAICQPSAGVHIVMPGYYSPE
 SMGL LDPATSDGRVIFFLPWQKMTIAGTTDTP TDVTHHPIPSEEDINFILNEVRNYLS
 CDVEVRRGDVLAAWSGIRPLVTDPKSADTQ SISRNHVVDISESGLITIAGGKWTTYR
 SMAEDTINA AVKTHNLKAGPSRTVGLF LQGGKDWSP TLYIRLVQDYGLESEVAQH LA
 ATYGDKAFEVAKMASVTGKRWP IGVRLVSEFPYIEAEVKYGIKEYACTAVDMISRR
 TRLAFLNVQAAEEALPRIVELMGRELNWDDYKKQE QLETARKFLYYEMGYKSRSEQ
 LTDRSEISLLPSDIDRYKKRFHKFDADQKGFITIVD VQRVLESINVQMDENTLHEILNE
 VDLNKN GQVELNEFLQLMSAIQKGRVSGSRLAILMKTA EENLDRRVPIPVDRSCGGL

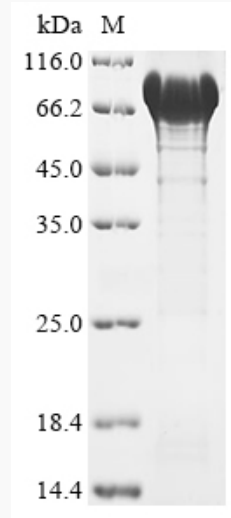
GENE INFORMATION

Gene Name	GPD2 glycerol-3-phosphate dehydrogenase 2 (mitochondrial) [Homo sapiens]
Official Symbol	GPD2
Synonyms	GPD2; glycerol-3-phosphate dehydrogenase 2 (mitochondrial); glycerol-3-phosphate dehydrogenase, mitochondrial; GPD-M; mtGPD; GPDH-M; mitochondrial glycerophosphate dehydrogenase; GDH2; GPDM; mGPDH;
Gene ID	2820
mRNA Refseq	NM_000408
Protein Refseq	NP_000399
MIM	138430

UniProt ID

P43304

SDS-PAGE



 Tel: 1-631-559-9269 1-516-512-3133

 Email: info@creative-biomart.com  Fax: 1-631-938-8127

 45-1 Ramsey Road, Shirley, NY 11967, USA