

Recombinant Human GPD2 Protein, GST-tagged

Cat. No. GPD2-5153H Lot. No. (See product label)

SPECIFICATION

Product Overview	Human GPD2 full-length ORF (AAH19874, 1 a.a. - 378 a.a.) recombinant protein with GST-tag at N-terminal.
Species	Human
Source	Wheat Germ
Description	Mitochondrial glycerophosphate dehydrogenase (EC 1.1.99.5), or GPD2, is located on the outer surface of the inner mitochondrial membrane and catalyzes the unidirectional conversion of glycerol-3-phosphate (G-3-P) to dihydroxyacetone phosphate (DHAP) with concomitant reduction of the enzyme-bound FAD. Together with a cytosolic NAD-linked GPD (GPD1; MIM 138420), GPD2 forms the glycerol phosphate shuttle, which uses the interconversion of G-3-P and DHAP to transfer reducing equivalents into mitochondria, resulting in the reoxidation of NADH formed during glycolysis.[supplied by OMIM
Molecular Mass	67.32 kDa
AA Sequence	MAFQKAVKGLTVGGGALATVLGLSQFAHYRRKQMNLAYVKAADCISEPVNREPPSR EAQLLTLQNTSEFDILVIGGGATGSGCALDAVTRGLKTALVERDDFSSGTSSRSTKLI HGGVRYLQKAIMKLDIEQYRMVKEALHERANLLEIAPHLSAPLPIMLPVYKWWQLPY YWVGIKLYDLVAGSNCLKSSYVLSKSRALEHFPMLQKDKLVGAIVYYDGQHNDARM NLAIALTAARYGAATANYMEVVSLKKTDPQTGKVHVSGARCKDVLGTGQEFDVRAK CVINATGPFTDSVRKMDDKDAAAICQPSAGVHIVMPGYYSPEMGLLDPATSDGRVI

 Tel: 1-631-559-9269 1-516-512-3133

 Email: info@creative-biomart.com  Fax: 1-631-938-8127

 45-1 Ramsey Road, Shirley, NY 11967, USA

FFLPWQKMTIAGTTDPTDVTTHHPIPSEEDINFILNEV

Applications

Enzyme-linked Immunoabsorbent Assay
 Western Blot (Recombinant protein)
 Antibody Production
 Protein Array

Notes

Best use within three months from the date of receipt of this protein.

Storage

Store at -80 centigrade. Aliquot to avoid repeated freezing and thawing.

Storage Buffer

50 mM Tris-HCl, 10 mM reduced Glutathione, pH=8.0 in the elution buffer.

GENE INFORMATION

Gene Name

GPD2 glycerol-3-phosphate dehydrogenase 2 (mitochondrial) [Homo sapiens]

Official Symbol

GPD2

Synonyms

GPD2; glycerol-3-phosphate dehydrogenase 2 (mitochondrial); glycerol-3-phosphate dehydrogenase, mitochondrial; GPD-M; mtGPD; GPDH-M; mitochondrial glycerophosphate dehydrogenase; GDH2; GPDM; mGPDH;

Gene ID

2820

mRNA Refseq

NM_000408

Protein Refseq

NP_000399

MIM

138430

 Tel: 1-631-559-9269 1-516-512-3133

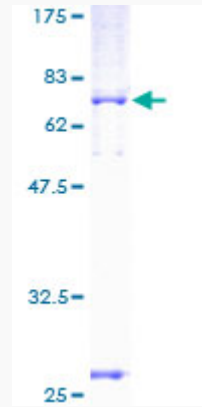
 Email: info@creative-biomart.com  Fax: 1-631-938-8127

 45-1 Ramsey Road, Shirley, NY 11967, USA

UniProt ID

P43304

Quality Control
Testing



12.5% SDS-PAGE Stained with Coomassie Blue.

 Tel: 1-631-559-9269 1-516-512-3133

 Email: info@creative-biomart.com  Fax: 1-631-938-8127

 45-1 Ramsey Road, Shirley, NY 11967, USA