

Recombinant Human GPER Protein, His&GST-tagged

Cat. No. GPER-1580H Lot. No. (See product label)

SPECIFICATION

Product Overview Recombinant Human GPER Protein (Met1-Ser62) with N-His&GST tag was expressed in E. coli.

Species Human

Source E.coli

ProteinLength Met1-Ser62

Description This gene encodes a multi-pass membrane protein that localizes to the endoplasmic reticulum and a member of the G-protein coupled receptor 1 family. This receptor binds estrogen and activates multiple downstream signaling pathways, leading to stimulation of adenylate cyclase and an increase in cyclic AMP levels, while also promoting intracellular calcium mobilization and synthesis of phosphatidylinositol 3,4,5-trisphosphate in the nucleus. This protein therefore plays a role in the rapid nongenomic signaling events widely observed following stimulation of cells and tissues with estrogen. This receptor has been shown to play a role in diverse biological processes, including bone and nervous system development, metabolism, cognition, male fertility and uterine function.

Form Freeze-dried powder

Molecular Mass Predicted Molecular Mass: 36.5 kDa
Accurate Molecular Mass: 40 kDa

 Tel: 1-631-559-9269 1-516-512-3133

 Email: info@creative-biomart.com  Fax: 1-631-938-8127

 45-1 Ramsey Road, Shirley, NY 11967, USA

| | |
|-----------------------|--|
| Purity | > 90% |
| Applications | Positive Control; Immunogen; SDS-PAGE; WB. |
| Stability | The thermal stability is described by the loss rate. The loss rate was determined by accelerated thermal degradation test, that is, incubate the protein at 37 centigrade for 48h, and no obvious degradation and precipitation were observed. The loss rate is less than 5% within the expiration date under appropriate storage condition. |
| Storage | Avoid repeated freeze/thaw cycles. Store at 2-8 centigrade for one month. Aliquot and store at -80 centigrade for 12 months. |
| Storage Buffer | 20mM Tris, 150mM NaCl, pH8.0, containing 1mM EDTA, 1mM DTT, 0.01% SKL, 5% Trehalose and Proclin300. |
| Reconstitution | Reconstitute in 20mM Tris, 150mM NaCl (pH8.0) to a concentration of 0.1-1.0 mg/mL. Do not vortex. |

GENE INFORMATION

| | |
|------------------------|--|
| Gene Name | GPER G protein-coupled estrogen receptor 1 [Homo sapiens (human)] |
| Official Symbol | GPER |
| Synonyms | GPER; G protein-coupled estrogen receptor 1; CMKRL2, G protein coupled receptor 30, GPR30; G-protein coupled estrogen receptor 1; CEPR; DRY12; FEG 1; GPCR Br; LERGU; LERGU2; LyGPR; mER; heptahelix receptor; chemokine receptor-like 2; IL8-related receptor DRY12; membrane estrogen receptor; G protein-coupled receptor 30; G-protein coupled receptor 30; chemoattractant receptor-like 2; leucine rich protein in GPR30 3UTR; lymphocyte-derived G-protein coupled receptor; constitutively expressed peptide-like receptor; flow-induced endothelial G-protein |

 Tel: 1-631-559-9269 1-516-512-3133

 Email: info@creative-biomart.com  Fax: 1-631-938-8127

 45-1 Ramsey Road, Shirley, NY 11967, USA

coupled receptor 1; FEG-1; GPR30; CMKRL2; GPCR-Br; MGC99678;

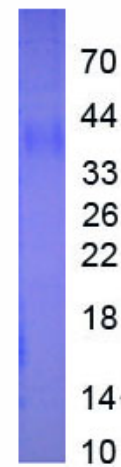
Gene ID 2852

mRNA Refseq NM_001039966

Protein Refseq NP_001035055

MIM 601805

UniProt ID Q99527



 Tel: 1-631-559-9269 1-516-512-3133

 Email: info@creative-biomart.com  Fax: 1-631-938-8127

 45-1 Ramsey Road, Shirley, NY 11967, USA