

Recombinant Human GPER Protein, GST-tagged

Cat. No. GPER-5230H Lot. No. (See product label)

SPECIFICATION

Product Overview Human GPR30 full-length ORF (NP_001496.1, 1 a.a. - 375 a.a.) recombinant protein with GST-tag at N-terminal.

Species Human

Source Wheat Germ

Description This gene is a member of the G-protein coupled receptor 1 family and encodes a multi-pass membrane protein that localizes to the endoplasmic reticulum. The protein binds estrogen, resulting in intracellular calcium mobilization and synthesis of phosphatidylinositol 3,4,5-trisphosphate in the nucleus. This protein therefore plays a role in the rapid nongenomic signaling events widely observed following stimulation of cells and tissues with estrogen. Alternate transcriptional splice variants which encode the same protein have been characterized. [provided by RefSeq]

Molecular Mass 68.6 kDa

AA Sequence

```
MDVTSQARGVGLEMYPGTAQPAAPNTTSPENLSHPLLGTALANGTGELSEHQQY
VIGLFLSCLYTIFLFPIGFVGNILILVVNISFREKMTIPDLYFINLAVADLILVADSLIEVFNL
HERYYDIAVLCTFMSLFLQVNMYSVFFLTWMSFDRIYALARAMRCSLFRTKHHARL
SCGLIWMASVSATLVPFTAVHLQHTDEACFCFADVREVQWLEVTLGFIKFAIIGLCY
SLIVRVLVRAHRHRGLRPRRQKALRMILAVVLVFFVCWLPENVFISVHLLQRTQPGA
APCKQSFRHAHPLTGHIVNLAAFSNSCLNPLIYSFLGETFRDKLRLYIEQKTNLPALN
RFCHAALKAVIPDSTEQSDVRFSSAV
```

 Tel: 1-631-559-9269 1-516-512-3133

 Email: info@creative-biomart.com  Fax: 1-631-938-8127

 45-1 Ramsey Road, Shirley, NY 11967, USA

Applications	<p>Enzyme-linked Immunoabsorbent Assay</p> <p>Western Blot (Recombinant protein)</p> <p>Antibody Production</p> <p>Protein Array</p>
Notes	Best use within three months from the date of receipt of this protein.
Storage	Store at -80 centigrade. Aliquot to avoid repeated freezing and thawing.
Storage Buffer	50 mM Tris-HCl, 10 mM reduced Glutathione, pH=8.0 in the elution buffer.
GENE INFORMATION	
Gene Name	GPER G protein-coupled estrogen receptor 1 [Homo sapiens]
Official Symbol	GPER
Synonyms	<p>GPER; G protein-coupled estrogen receptor 1; CMKRL2, G protein coupled receptor 30, GPR30; G-protein coupled estrogen receptor 1; CEPR; DRY12; FEG 1; GPCR Br; LERGU; LERGU2; LyGPR; mER; heptahelix receptor; chemokine receptor-like 2; IL8-related receptor DRY12; membrane estrogen receptor; G protein-coupled receptor 30; G-protein coupled receptor 30; chemoattractant receptor-like 2; leucine rich protein in GPR30 3UTR; lymphocyte-derived G-protein coupled receptor; constitutively expressed peptide-like receptor; flow-induced endothelial G-protein coupled receptor 1; FEG-1; GPR30; CMKRL2; GPCR-Br; MGC99678;</p>
Gene ID	2852
mRNA Refseq	NM_001039966
Protein Refseq	NP_001035055

 Tel: 1-631-559-9269 1-516-512-3133

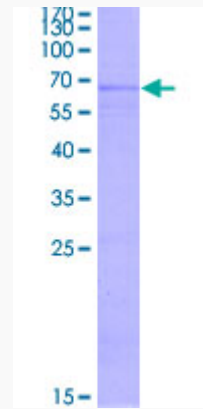
 Email: info@creative-biomart.com  Fax: 1-631-938-8127

 45-1 Ramsey Road, Shirley, NY 11967, USA

MIM 601805

UniProt ID Q99527

**Quality Control
Testing**



12.5% SDS-PAGE Stained with Coomassie Blue.

 Tel: 1-631-559-9269 1-516-512-3133

 Email: info@creative-biomart.com  Fax: 1-631-938-8127

 45-1 Ramsey Road, Shirley, NY 11967, USA