

Recombinant Human GPHN Protein, Myc/DDK-tagged, C13 and N15-labeled

Cat. No. GPHN-2749H **Lot. No.** (See product label)

SPECIFICATION

Product Overview	GPHN MS Standard C13 and N15-labeled recombinant protein (NP_065857) with a C-terminal MYC/DDK tag, was expressed in HEK293 cells.
Species	Human
Source	HEK293
Description	This gene encodes a neuronal assembly protein that anchors inhibitory neurotransmitter receptors to the postsynaptic cytoskeleton via high affinity binding to a receptor subunit domain and tubulin dimers. In nonneuronal tissues, the encoded protein is also required for molybdenum cofactor biosynthesis. Mutations in this gene may be associated with the neurological condition hyperplexia and also lead to molybdenum cofactor deficiency. Numerous alternatively spliced transcript variants encoding different isoforms have been described; however, the full-length nature of all transcript variants is not currently known.
Molecular Mass	83.4 kDa
AA Sequence	MATEGMILTNDHQIRVGVLTVSDSCFRNLAEDRSGINLKDLVQDPSLLGGTISAYKI VPDEIEEIKETLIDWCDEKELNLILTTGGTGFAPRDVTPEATKEVIEREAPGMALMLM GSLNVTPLGMLSRPVCGIRGKTLIINLPGSKKGSQECFQFILPALPHAIDLLRDAIVKV KEVHDELEDLPSPPPPLSPPPTTSPHKQTEDKGVQCEEEEEEEKKDSGVASTEDSSS SHITAAAIAAKKHPFYTSPAVVMAHGEQPIPLINYSHHSTDERIPDSIISRGVQVLPR

 Tel: 1-631-559-9269 1-516-512-3133

 Email: info@creative-biomart.com  Fax: 1-631-938-8127

 45-1 Ramsey Road, Shirley, NY 11967, USA

DTASLSTTPSESPRAQATSRLSTASCPTPKVQSRCSSKENILRASHSAVDITKVARR
 HRMSPFPLTSMDFKAFITVLEMTPVLGTEIINYRDGMGRVLAQDVYAKDNLPPFPASV
 KDGAVRAADGPGDRFIIGESQAGEQPTQTVMPGQVMRVTTGAPIPCGADAVVQV
 EDTELIRESDDGTEELEVRILVQARPGQDIRPIGHDIKRGECVLAKGTHMGPSEIGLL
 ATVGVTEVEVNKFPVVAVMSTGNELLNPEDDLLPGKIRDSNRSTLLATIQEHEGYPTIN
 LGIVGDNPDLLNALNEGISRADVIITSGGVSMGEKDYLKQVLDIDLHAQIHFGRVFM
 KPGLPTTFATLDIDGVRKIIFALPGNPVSAVTCNLFVVPALRKMGGILDPRPTIHKARL
 SCDVKLDRPEYHRCILTWHHQEPLPWAQSTGNQMSSRLMSMRSANGLMLPKT
 EQYVELHKGEVVDVMVIGRLTRTRPLEQKLISEEDLAANDILDYKDDDDKV

Purity > 80% as determined by SDS-PAGE and Coomassie blue staining

Stability Stable for 3 months from receipt of products under proper storage and handling conditions.

Storage Store at -80 centigrade. Avoid repeated freeze-thaw cycles.

Concentration 50 µg/mL as determined by BCA

Storage Buffer 100 mM glycine, 25 mM Tris-HCl, pH 7.3.

GENE INFORMATION

Gene Name [GPHN](#) [gephyrin](#) [[Homo sapiens \(human\)](#)]

Official Symbol [GPHN](#)

Synonyms GPHN; gephyrin; KIAA1385; GPH; GEPH; GPHRYN;

Gene ID [10243](#)

 Tel: 1-631-559-9269 1-516-512-3133

 Email: info@creative-biomart.com  Fax: 1-631-938-8127

 45-1 Ramsey Road, Shirley, NY 11967, USA

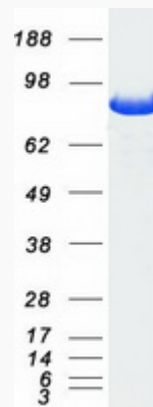
mRNA Refseq [NM_020806](#)

Protein Refseq [NP_065857](#)

MIM [603930](#)

UniProt ID [Q9NQX3](#)

SDS-PAGE



 Tel: 1-631-559-9269 1-516-512-3133

 Email: info@creative-biomart.com  Fax: 1-631-938-8127

 45-1 Ramsey Road, Shirley, NY 11967, USA