

Recombinant Human GPHN Protein, GST-tagged

Cat. No. GPHN-5155H **Lot. No.** (See product label)

SPECIFICATION

Product Overview	Human GPHN partial ORF (NP_065857, 677 a.a. - 769 a.a.) recombinant protein with GST-tag at N-terminal.
Species	Human
Source	Wheat Germ
ProteinLength	677-769 aa
Description	This gene encodes a neuronal assembly protein that anchors inhibitory neurotransmitter receptors to the postsynaptic cytoskeleton via high affinity binding to a receptor subunit domain and tubulin dimers. In nonneuronal tissues, the encoded protein is also required for molybdenum cofactor biosynthesis. Mutations in this gene may be associated with the neurological condition hyperplexia and also lead to molybdenum cofactor deficiency. Numerous alternatively spliced transcript variants encoding different isoforms have been described; however, the full-length nature of all transcript variants is not currently known. [provided by RefSeq]
Molecular Mass	35.97 kDa
AA Sequence	RKMQGILDPRPTIHKARLSCDVKLDPRPEYHRCILTWHHQEPLPWAQSTGNQMSSRL MSMRSANGLLMLPPKTEQYVELHKGEVVDVMVIGRL
Applications	Enzyme-linked Immunoabsorbent Assay Western Blot (Recombinant protein)

 Tel: 1-631-559-9269 1-516-512-3133

 Email: info@creative-biomart.com  Fax: 1-631-938-8127

 45-1 Ramsey Road, Shirley, NY 11967, USA

Antibody Production
Protein Array

Notes	Best use within three months from the date of receipt of this protein.
Storage	Store at -80 centigrade. Aliquot to avoid repeated freezing and thawing.
Storage Buffer	50 mM Tris-HCl, 10 mM reduced Glutathione, pH=8.0 in the elution buffer.

GENE INFORMATION

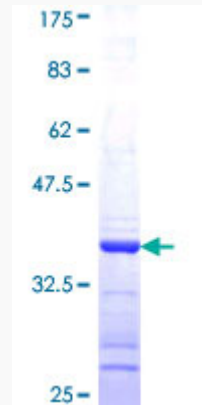
Gene Name	GPHN gephyrin [Homo sapiens]
Official Symbol	GPHN
Synonyms	GPHN; gephyrin; KIAA1385; GPH; GEPH; GPHRYN;
Gene ID	10243
mRNA Refseq	NM_001024218
Protein Refseq	NP_001019389
MIM	603930
UniProt ID	Q9NQX3

 Tel: 1-631-559-9269 1-516-512-3133

 Email: info@creative-biomart.com  Fax: 1-631-938-8127

 45-1 Ramsey Road, Shirley, NY 11967, USA

**Quality Control
Testing**



12.5% SDS-PAGE Stained with Coomassie Blue.

 Tel: 1-631-559-9269 1-516-512-3133

 Email: info@creative-biomart.com  Fax: 1-631-938-8127

 45-1 Ramsey Road, Shirley, NY 11967, USA