

# Recombinant Full Length Human GPHN Protein, C-Flag-tagged

Cat. No. GPHN-873HFL Lot. No. (See product label)

## SPECIFICATION

<b>Product Overview</b>	Recombinant Full Length Human GPHN Protein, fused to Flag-tag at C-terminus, was expressed in Mammalian cells.
<b>Species</b>	Human
<b>Source</b>	Mammalian Cells
<b>Description</b>	This gene encodes a neuronal assembly protein that anchors inhibitory neurotransmitter receptors to the postsynaptic cytoskeleton via high affinity binding to a receptor subunit domain and tubulin dimers. In nonneuronal tissues, the encoded protein is also required for molybdenum cofactor biosynthesis. Mutations in this gene may be associated with the neurological condition hyperplexia and also lead to molybdenum cofactor deficiency. Numerous alternatively spliced transcript variants encoding different isoforms have been described; however, the full-length nature of all transcript variants is not currently known.
<b>Form</b>	25 mM Tris HCl, pH 7.3, 100 mM glycine, 10% glycerol.
<b>Molecular Mass</b>	83.3 kDa
<b>AA Sequence</b>	MATEGMILTNHDHQIRVGVLTVSDSCFRNLAEDRSGINLKDLVQDPSLLGGTISAYKI VPDEIEEIKETL IDWCDEKELNLILTTGGTGFAPRDVTPEATKEVIEREAPGMALAML MGSLNVTPLGMLSRPVCGIRGKTL IINLPGSKKGSQECFQFILPALPHAIDLRLDAIVK VKEVHDELEDLPSPPPPLSPPTTSPHKQTEDKGV QCEEEEEEEKKDSGVASTEDSS SSHITAAAIAAKKHPFYTSPAVVMAHGEQPIPLINYSHHSTDERIPDS IISRGVQVLP

 Tel: 1-631-559-9269 1-516-512-3133

 Email: [info@creative-biomart.com](mailto:info@creative-biomart.com)  Fax: 1-631-938-8127

 45-1 Ramsey Road, Shirley, NY 11967, USA

RDTASLSTTPSESPRAQATSRLSTASCPTPKVQSRCSSKENILRASHSAVDITKVAR  
 RHR MSPFPLTSMDFAFITVLEMTPLVLTGTEIINYRDGMGRVLAQDVYAKDNLPPFPAS  
 VKDGYAVRAADGPGDR FIIGESQAGEQPTQTVMPGQVMRVTTGAPIPCGADAVVQ  
 VEDTELIRESDDGTEELEVRILVQARPGQDI RPIGHDIKRGECVLAKGTHMGPSEIGL  
 LATVGVTEVEVNKFPVVAVMSTGNELNPEDDLPGKIRDSNR STLLATIQEHEGYPTI  
 NLGIVGDNPDLLNALNEGISRADVIITSGGVSMGEKDYLKQVLDIDLHAQIHFG RVF  
 MKPGLPTTFATLDIDGVRKIIFALPGNPVSAVVTCNLFVVPALRKMGGILDPRPTIHKAR  
 LSCDVKL DPRPEYHRCILTWHHQEPLPWAQSTGNQMSSRLMSMRSANGLLMLPP  
 KTEQYVELHKGEVVDVMVIGRLTRTRPLEQKLISEEDLAANDILDYKDDDDKV

**Purity** > 80% as determined by SDS-PAGE and Coomassie blue staining.

**Stability** Stable for 12 months from the date of receipt of the product under proper storage and handling conditions. Avoid repeated freeze-thaw cycles.

**Storage** Store at -80 centigrade.

**Concentration** >50 ug/mL as determined by microplate BCA method.

**Preparation** Recombinant protein was captured through anti-DDK affinity column followed by conventional chromatography steps.

**Protein Families** Druggable Genome

**Full Length** Full L.

## GENE INFORMATION

**Gene Name** [GPHN](#) [gephyrin \[ Homo sapiens \(human\) \]](#)

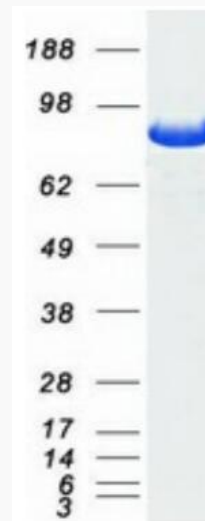
**Official Symbol** [GPHN](#)

 Tel: 1-631-559-9269 1-516-512-3133

 Email: [info@creative-biomart.com](mailto:info@creative-biomart.com)  Fax: 1-631-938-8127

 45-1 Ramsey Road, Shirley, NY 11967, USA

<b>Synonyms</b>	GPH; GEPH; HKPX1; GPHRYN; MOCODC
<b>Gene ID</b>	10243
<b>mRNA Refseq</b>	NM_020806.5
<b>Protein Refseq</b>	NP_065857.1
<b>MIM</b>	603930
<b>UniProt ID</b>	Q9NQX3



Coomassie blue staining of purified GPHN protein.

 Tel: 1-631-559-9269 1-516-512-3133

 Email: [info@creative-biomart.com](mailto:info@creative-biomart.com)  Fax: 1-631-938-8127

 45-1 Ramsey Road, Shirley, NY 11967, USA