

Recombinant Human GPI Protein, His-tagged

Cat. No. GPI-009H Lot. No. (See product label)

SPECIFICATION

Product Overview Recombinant Human GPI protein (2-558) with a C-terminal His-tag was expressed in E. coli

Species Human

Source E.coli

ProteinLength 2-558

Description

This gene encodes a member of the glucose phosphate isomerase protein family. The encoded protein has been identified as a moonlighting protein based on its ability to perform mechanistically distinct functions. In the cytoplasm, the gene product functions as a glycolytic enzyme (glucose-6-phosphate isomerase) that interconverts glucose-6-phosphate and fructose-6-phosphate. Extracellularly, the encoded protein (also referred to as neuroleukin) functions as a neurotrophic factor that promotes survival of skeletal motor neurons and sensory neurons, and as a lymphokine that induces immunoglobulin secretion. The encoded protein is also referred to as autocrine motility factor based on an additional function as a tumor-secreted cytokine and angiogenic factor. Defects in this gene are the cause of nonspherocytic hemolytic anemia and a severe enzyme deficiency can be associated with hydrops fetalis, immediate neonatal death and neurological impairment. Alternative splicing results in multiple transcript variants.

Molecular Mass 66.0 kDa

 Tel: 1-631-559-9269 1-516-512-3133

 Email: info@creative-biomart.com  Fax: 1-631-938-8127

 45-1 Ramsey Road, Shirley, NY 11967, USA

Purity	≥95% estimated by SDS-PAGE
Unit Definition	One unit is defined as the amount of enzyme required to reduce 1 μmol of NADP + to NADPH per minute at 25 centigrade in 50 mM Triethanolamine, pH 7.6, containing 1 mM MgCl ₂ .
Stability	≥ 2 years
Storage	-80 centigrade
Storage Buffer	25 mM Tris-HCl, pH 7.0, 100 mM sodium chloride, and 10% glycerol
Shipping	Dry ice in continental US, may vary elsewhere.

GENE INFORMATION

Gene Name	GPI glucose-6-phosphate isomerase [<i>Homo sapiens</i> (human)]
Official Symbol	GPI
Synonyms	GPI; glucose-6-phosphate isomerase; AMF; NLK; PGI; PHI; GNPI; SA36; SA-36; glucose-6-phosphate isomerase; autocrine motility factor; hexose monophosphate isomerase; hexosephosphate isomerase; neuroleukin; oxoisomerase; phosphoglucose isomerase; phosphohexomutase; phosphohexose isomerase; phosphosaccharomutase; sperm antigen-36; EC 5.3.1.9
Gene ID	2821
mRNA Refseq	NM_000175
Protein Refseq	NP_000166

 Tel: 1-631-559-9269 1-516-512-3133

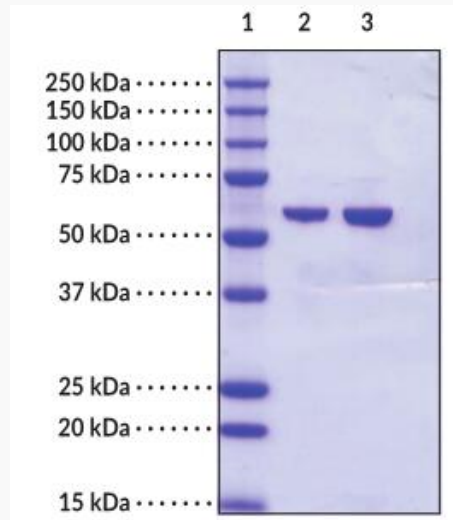
 Email: info@creative-biomart.com  Fax: 1-631-938-8127

 45-1 Ramsey Road, Shirley, NY 11967, USA

MIM 172400

UniProt ID P06744

**SDS-PAGE Analysis
of GPI**



Lane 1: MW Markers

Lane 2: GPI (human recombinant) (1 g)

Lane 3: GPI (human recombinant) (2 g)

 Tel: 1-631-559-9269 1-516-512-3133

 Email: info@creative-biomart.com  Fax: 1-631-938-8127

 45-1 Ramsey Road, Shirley, NY 11967, USA