

Recombinant Mouse GPI Protein (2-558 aa), His-B2M-tagged

Cat. No. GPI-2091M Lot. No. (See product label)

SPECIFICATION

Product Overview	Recombinant Mouse GPI Protein (2-558 aa) is produced by E. coli expression system. This protein is fused with a 6xHis-B2M tag at the N-terminal. Research Area: Neuroscience. Protein Description: Full Length of Mature Protein.
Species	Mouse
Source	E.coli
ProteinLength	2-558 aa
Description	Besides it's role as a glycolytic enzyme, mammalian GPI can function as a tumor-secreted cytokine and an angiogenic factor (AMF) that stimulates endothelial cell motility. GPI is also a neurotrophic factor (Neuroleukin) for spinal and sensory neurons.
Form	Tris-based buffer,50% glycerol
Molecular Mass	76.6 kDa
AA Sequence	AALTRNPQFQKLEWHRANSANLKLRELFADPERFNNFSLNLTNHHGILVDYSKN LVNKEVMQMLVELAKSRGVEAARDNMFSGSKINYTENRAVLHVALRNRSNTPIKVD GKDVMPEVNRVLDKMKSFQVRSGDWKGYTGKSITDIINIGIGGSDLGPLMVTEAL KPYSKGGPRVWFVSNIDGTHIAKTLASLSPETSLFIIASKTFTTQETITNAETAKEWFL EAAKDPSAVAKHFVALSTNTAKVKEFGIDPQNMFEFWDWVGGRYSLWSAIGLSIAL HVGFDHFEQLLSGAHWMDQHFLKTPLEKNAPVLLALLGIWYINCYGCETHALLPYDQ

 Tel: 1-631-559-9269 1-516-512-3133

 Email: info@creative-biomart.com  Fax: 1-631-938-8127

 45-1 Ramsey Road, Shirley, NY 11967, USA

YMHRFAAYFQQGDMESNGKYITKSGARVDHQTGPIVWGEPGTNGQHAFYQLIHQG
TKMIPCDFLIPVQTQHPPIRKGLHHKILLANFLAQTEALMKGKLPPEARKELQAAGKSP
EDLEKLLPHKVFEGNRPTNSIVFTKLTPFILGALIAMYEHKIFVQGIMWDINSFDQWGV
ELGKQLAKKIEPELEGSSAVTSHDSSTNGLISFIKQQRDTKLE

Purity > 90% as determined by SDS-PAGE.

Notes Repeated freezing and thawing is not recommended. Store working aliquots at 4 centigrade for up to one week.

Storage The shelf life is related to many factors, storage state, buffer ingredients, storage temperature and the stability of the protein itself. Generally, the shelf life of liquid form is 6 months at -20 centigrade/-80 centigrade. The shelf life of lyophilized form is 12 months at -20 centigrade/-80 centigrade.

Concentration A hardcopy of COA with reconstitution instruction is sent along with the products.

GENE INFORMATION

Gene Name [Gpi1 glucose phosphate isomerase 1 \[Mus musculus \(house mouse\) \]](#)

Official Symbol [GPI](#)

Synonyms [Gpi](#); [MF](#); [NK](#); [Amf](#); [Gpi](#); [Nlk](#); [Org](#); [Pgi](#); [Phi](#); [Gpi-1](#); [Gpi1s](#); [Gpi-1r](#); [Gpi-1s](#); [Gpi-1t](#); [Gpi1-r](#); [Gpi1-s](#); [Gpi1-t](#); [NK/GPI](#);

Gene ID [14751](#)

mRNA Refseq [NM_008155](#)

Protein Refseq [NP_032181](#)

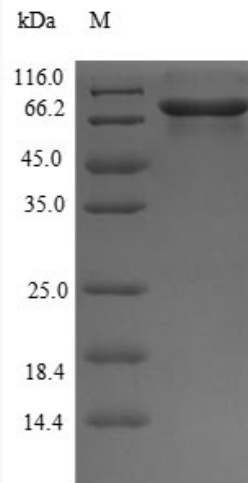
 Tel: 1-631-559-9269 1-516-512-3133

 Email: info@creative-biomart.com  Fax: 1-631-938-8127

 45-1 Ramsey Road, Shirley, NY 11967, USA

UniProt ID

P06745



(Tris-Glycine gel) Discontinuous SDS-PAGE (reduced) with 5% enrichment gel and 15% separation gel.

Tel: 1-631-559-9269 1-516-512-3133

Email: info@creative-biomart.com Fax: 1-631-938-8127

45-1 Ramsey Road, Shirley, NY 11967, USA