

Recombinant Human GPI Protein (Met263-Asn475), N-His tagged

Cat. No. GPI-2343H **Lot. No.** (See product label)

SPECIFICATION

Product Overview	Recombinant human GPI (Met263-Asn475) protein fused with the N-His tag was expressed in E. coli.
Species	Human
Source	E.coli
ProteinLength	Met263-Asn475
Molecular Mass	26.63 kDa
Purity	>90 % as determined by SDS-PAGE.
Notes	For research use only.
Storage	Use a manual defrost freezer and avoid repeated freeze thaw cycles. Store at 2 to 8 centigrade for one week. Store at -20 to -80 centigrade for twelve months from the date of receipt.
Storage Buffer	0.01M PBS, pH 7.4, 0.02 % NLS
Reconstitution	Reconstitute in sterile water for a stock solution.
Shipping	In general, proteins are provided as lyophilized powder/frozen liquid. They are

 Tel: 1-631-559-9269 1-516-512-3133

 Email: info@creative-biomart.com  Fax: 1-631-938-8127

 45-1 Ramsey Road, Shirley, NY 11967, USA

shipped out with dry ice/blue ice unless customers require otherwise.

GENE INFORMATION

Gene Name	GPI glucose-6-phosphate isomerase [Homo sapiens (human)]
Official Symbol	GPI
Synonyms	GPI; glucose-6-phosphate isomerase; glucose phosphate isomerase; AMF; NLK; neuroleukin; oxoisomerase; sperm antigen 36; sperm antigen-36; phosphohexomutase; phosphosaccharomutase; phosphohexose isomerase; phosphoglucose isomerase; autocrine motility factor; hexosephosphate isomerase; hexose monophosphate isomerase; PGI; PHI; GNPI; SA36; SA-36; DKFZp686C13233;
Gene ID	2821
mRNA Refseq	NM_000175
Protein Refseq	NP_000166
MIM	172400
UniProt ID	P06744

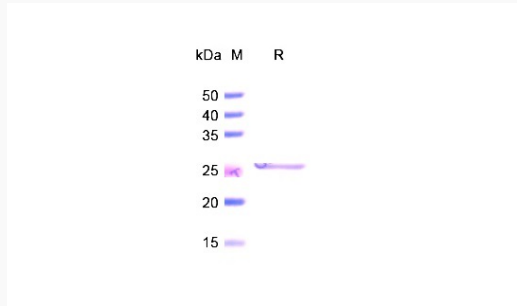
 Tel: 1-631-559-9269 1-516-512-3133

 Email: info@creative-biomart.com  Fax: 1-631-938-8127

 45-1 Ramsey Road, Shirley, NY 11967, USA



SDS-PAGE



Tel: 1-631-559-9269 1-516-512-3133

Email: info@creative-biomart.com Fax: 1-631-938-8127

45-1 Ramsey Road, Shirley, NY 11967, USA