

# Recombinant Human Full length GPI protein(1-558 aa), C-His-tagged

**Cat. No.** GPI-2883H    **Lot. No.** (See product label)

## SPECIFICATION

<b>Product Overview</b>	Recombinant Human Full length GPI protein(P06744)(1-558 aa), fused with C-terminal His tag, was expressed in E. coli.
<b>Species</b>	Human
<b>Source</b>	E.coli
<b>ProteinLength</b>	1-558 aa
<b>Form</b>	0.15 M Phosphate buffered saline
<b>Molecular Mass</b>	64 kDa
<b>Storage</b>	Shipped on dry ice. Avoid repeated freeze-thaw cycles. Upon receipt, 2 days when stored at 2 to 8 °C after thawing. Up to 12 months when aliquoted and stored at -20 to -80°C.
<b>Reconstitution</b>	It is recommended that sterile water be added to the vial to prepare a stock solution of 0.2 ug/ul. Centrifuge the vial at 4°C before opening to recover the entire contents.
<b>AA Sequence</b>	MAALTRDPQFQKLQQWYREHRSELNLRRLFDANKDRFNHFSLTLNTNHHGHILVDYS KNLVTEDVMRMLVDLAKSRGVEAARERMFNGEKINYTEGRAVLHVALRNRSNTPILV DGKDVMPEVNKVLDKMKSFCQVRVSGDWKGYTGKTITDVINIGIGGSDLGPLMVTE ALKPYSGGPRVWYVSNIDGTHIAKTLAQLNPESLFIASKTFTTQETITNAETAKEW

 Tel: 1-631-559-9269    1-516-512-3133

 Email: [info@creative-biomart.com](mailto:info@creative-biomart.com)     Fax: 1-631-938-8127

 45-1 Ramsey Road, Shirley, NY 11967, USA

FLQAAKDPSAVAKHFVALSTNTTKVKEFGIDPQNMFEFWDWVGGRYSLWSAIGLSIA  
 LHVGFDFNEQLLSGAHWMDQHFRTTPLEKNAPVLLALLGIWYINCFGCETHAMLPY  
 DQYLHRFAAYFQQGDMESNGKYITKSGTRVDHQTGPIVWGEPTNGQHAFYQLIH  
 QGTKMIPCDLIPVQTQHPIRKGLHHKILLANFLAQTEALMRGKSTEEARKELQAAGK  
 SPEDLERLLPHKVFEGNRPTNSIVFTKLT PFM LGALVAMYEHKIFVQGIWDINSFDQ  
 WGVELGKQLAKKIEPELDGSAQVTSHDASTNGLINFIKQQREARVQ

## GENE INFORMATION

**Gene Name** [GPI glucose-6-phosphate isomerase \[ Homo sapiens \]](#)

**Official Symbol** [GPI](#)

**Synonyms** GPI; glucose-6-phosphate isomerase; glucose phosphate isomerase; AMF; NLK; neuroleukin; oxoisomerase; sperm antigen 36; sperm antigen-36; phosphohexomutase; phosphosaccharomutase; phosphohexose isomerase; phosphoglucose isomerase; autocrine motility factor; hexosephosphate isomerase; hexose monophosphate isomerase; PGI; PHI; GNPI; SA36; SA-36; DKFZp686C13233;

**Gene ID** [2821](#)

**mRNA Refseq** [NM\\_000175](#)

**Protein Refseq** [NP\\_000166](#)

**MIM** [172400](#)

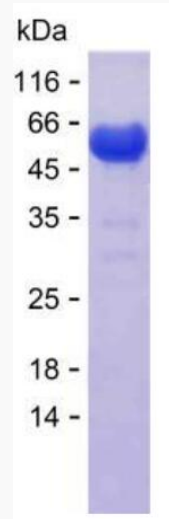
**UniProt ID** [P06744](#)

 Tel: 1-631-559-9269 1-516-512-3133

 Email: [info@creative-biomart.com](mailto:info@creative-biomart.com)  Fax: 1-631-938-8127

 45-1 Ramsey Road, Shirley, NY 11967, USA

**SDS-PAGE**



 Tel: 1-631-559-9269 1-516-512-3133

 Email: [info@creative-biomart.com](mailto:info@creative-biomart.com)  Fax: 1-631-938-8127

 45-1 Ramsey Road, Shirley, NY 11967, USA