

Recombinant Human GPI Protein, GST-tagged

Cat. No. GPI-5156H Lot. No. (See product label)

SPECIFICATION

Product Overview	Human GPI full-length ORF (AAH04982, 1 a.a. - 558 a.a.) recombinant protein with GST-tag at N-terminal.
Species	Human
Source	Wheat Germ
Description	<p>This gene belongs to the GPI family whose members encode multifunctional phosphoglucose isomerase proteins involved in energy pathways. The protein encoded by this gene is a dimeric enzyme that catalyzes the reversible isomerization of glucose-6-phosphate and fructose-6-phosphate. The protein functions in different capacities inside and outside the cell. In the cytoplasm, the gene product is involved in glycolysis and gluconeogenesis, while outside the cell it functions as a neurotrophic factor for spinal and sensory neurons. Defects in this gene are the cause of nonspherocytic hemolytic anemia and a severe enzyme deficiency can be associated with hydrops fetalis, immediate neonatal death and neurological impairment.</p> <p>[provided by RefSeq]</p>
Molecular Mass	86.9 kDa
AA Sequence	<p>MAALTRDPQFQKLQQWYREHRSELNLRRLFDANKDRFNHFSLTLNTNHGHILVDYS KNLVTEDVMRMLVDLAKSRGVEAARERMFNGEKINYTEGRAVLHVALRNRSNTPILV DGKDVMPENVKVLDKMKSFCQVRVSGDWKGYTGKTITDVINIGIGGSDLGPLMVTE ALKPYSSGGPRVWYVSNIDGTHIAKTLAQLNPESLFIASKTFTTQETITNAETAKEW</p>

 Tel: 1-631-559-9269 1-516-512-3133

 Email: info@creative-biomart.com  Fax: 1-631-938-8127

 45-1 Ramsey Road, Shirley, NY 11967, USA

FLQAAKDPSAVAKHFVALSTNTTKVKEFGIDPQNMFEFWDWVGGRYSLWSAIGLSIA
 LHVGFDFEQLLSGAHWMDQHFRTTPLEKNAPVLLALLGIWYINCFGCETHAMLPY
 DQYLHRFAAYFQQGDMESNGKYITKSGTRVDHQTGPIVWGEPTNGQHAFYQLIH
 QGTMIPCDFLIPVQTQHPIRKGLHHKILLANFLAQTEALMRGKSTEEARKELQAAGK
 SPEDLERLLPHKVFEGNRPTNSIVFTKLTPFMLGALVAMYEHKIFVQGIWDINSFDQ
 WGVELGKQLAKKIEPELDGSAQVTSHDASTNGLINFIKQQREARVQ

Applications	Enzyme-linked Immunoabsorbent Assay Western Blot (Recombinant protein) Antibody Production Protein Array
Notes	Best use within three months from the date of receipt of this protein.
Storage	Store at -80 centigrade. Aliquot to avoid repeated freezing and thawing.
Storage Buffer	50 mM Tris-HCl, 10 mM reduced Glutathione, pH=8.0 in the elution buffer.

GENE INFORMATION

Gene Name	GPI glucose-6-phosphate isomerase [<i>Homo sapiens</i>]
Official Symbol	GPI
Synonyms	GPI; glucose-6-phosphate isomerase; glucose phosphate isomerase; AMF; NLK; neuroleukin; oxoisomerase; sperm antigen 36; sperm antigen-36; phosphohexomutase; phosphosaccharomutase; phosphohexose isomerase; phosphoglucose isomerase; autocrine motility factor; hexosephosphate isomerase; hexose monophosphate isomerase; PGI; PHI; GNPI; SA36; SA-36; DKFZp686C13233;

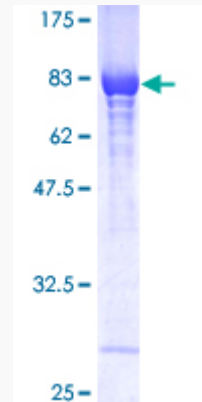
 Tel: 1-631-559-9269 1-516-512-3133

 Email: info@creative-biomart.com  Fax: 1-631-938-8127

 45-1 Ramsey Road, Shirley, NY 11967, USA

Gene ID	2821
mRNA Refseq	NM_000175
Protein Refseq	NP_000166
MIM	172400
UniProt ID	P06744

**Quality Control
Testing**



12.5% SDS-PAGE Stained with Coomassie Blue.

 Tel: 1-631-559-9269 1-516-512-3133

 Email: info@creative-biomart.com  Fax: 1-631-938-8127

 45-1 Ramsey Road, Shirley, NY 11967, USA