

Recombinant Full Length Human GPI Protein, C-Flag-tagged

Cat. No. GPI-621HFL Lot. No. (See product label)

SPECIFICATION

Product Overview Recombinant Full Length Human GPI Protein, fused to Flag-tag at C-terminus, was expressed in Mammalian cells.

Species Human

Source Mammalian Cells

Description

This gene encodes a member of the glucose phosphate isomerase protein family. The encoded protein has been identified as a moonlighting protein based on its ability to perform mechanistically distinct functions. In the cytoplasm, the gene product functions as a glycolytic enzyme (glucose-6-phosphate isomerase) that interconverts glucose-6-phosphate and fructose-6-phosphate. Extracellularly, the encoded protein (also referred to as neuroleukin) functions as a neurotrophic factor that promotes survival of skeletal motor neurons and sensory neurons, and as a lymphokine that induces immunoglobulin secretion. The encoded protein is also referred to as autocrine motility factor based on an additional function as a tumor-secreted cytokine and angiogenic factor. Defects in this gene are the cause of nonspherocytic hemolytic anemia and a severe enzyme deficiency can be associated with hydrops fetalis, immediate neonatal death and neurological impairment. Alternative splicing results in multiple transcript variants.

Form 25 mM Tris HCl, pH 7.3, 100 mM glycine, 10% glycerol.

Molecular Mass 63 kDa

 Tel: 1-631-559-9269 1-516-512-3133

 Email: info@creative-biomart.com  Fax: 1-631-938-8127

 45-1 Ramsey Road, Shirley, NY 11967, USA

AA Sequence	<p>MAALTRDPQFQKLQQWYREHRSELNLRRLFDANKDRFNHFSLTLNTNHGHILVDYS KNLVTEDEVMRMLVD LAKSRGVEAARERMFNGEKINYTEGRAVLHVALRNRSNTPIL VDGKDVMPVENKVLDKMKSFCQVRVSGD WKGYTGKTITDVINIGIGGSDLGPLMVT EALKPYSSGGPRVWYVSNIDGTHIAKTLAQLNPESLFIAS KTFTTQETITNAETAKE WFLQAAKDPSAVAKHFVALSTNTTKVKEFGIDPQNMFEFWDWVGGRYSLWSAI GL SIALHVGFDFNFEQLLSGAHWMDQHFRTTPEKNAPVLLALLGIWYINCFGCETHAML PYDQYLHRFAA YFQQGDMESNGKYITKSGTRVDHQTGPIVWGEPGTNGQHAFYQL IHQGTKMIPCDLIPVQTQHPIRKGL HHKILLANFLAQTEALMRGKSTEEARKELQAA GKSPEDLERLLPHKVFEGNRPTNSIVFTKLTPEMLGAL VAMYEHKIFVQGIWDINSF DQWGVELGKQLAKKIEPELDGSAQVTSHDASTNGLINFIKQQREARVQTRTRPLEQ KLISEEDLAANDILDYKDDDDKV</p>
Purity	> 80% as determined by SDS-PAGE and Coomassie blue staining.
Stability	Stable for 12 months from the date of receipt of the product under proper storage and handling conditions. Avoid repeated freeze-thaw cycles.
Storage	Store at -80 centigrade.
Concentration	>50 ug/mL as determined by microplate BCA method.
Preparation	Recombinant protein was captured through anti-DDK affinity column followed by conventional chromatography steps.
Protein Families	Druggable Genome
Protein Pathways	Amino sugar and nucleotide sugar metabolism, Glycolysis / Gluconeogenesis, Metabolic pathways, Pentose phosphate pathway, Starch and sucrose metabolism
Full Length	Full L.

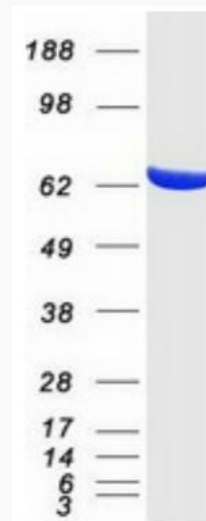
 Tel: 1-631-559-9269 1-516-512-3133

 Email: info@creative-biomart.com  Fax: 1-631-938-8127

 45-1 Ramsey Road, Shirley, NY 11967, USA

GENE INFORMATION

Gene Name	GPI glucose-6-phosphate isomerase [Homo sapiens (human)]
Official Symbol	GPI
Synonyms	AMF; NLK; PGI; PHI; GNPI; SA36; SA-36
Gene ID	2821
mRNA Refseq	NM_000175.5
Protein Refseq	NP_000166.2
MIM	172400
UniProt ID	P06744



 Tel: 1-631-559-9269 1-516-512-3133

 Email: info@creative-biomart.com  Fax: 1-631-938-8127

 45-1 Ramsey Road, Shirley, NY 11967, USA



Coomassie blue staining of purified GPI protein.

 Tel: 1-631-559-9269 1-516-512-3133

 Email: info@creative-biomart.com  Fax: 1-631-938-8127

 45-1 Ramsey Road, Shirley, NY 11967, USA