

## Recombinant Mouse GPI1 Protein (2-558 aa), His-tagged

Cat. No. GPI1-1404M Lot. No. (See product label)

### SPECIFICATION

<b>Product Overview</b>	Recombinant Mouse GPI1 Protein (2-558 aa) is produced by Yeast expression system. This protein is fused with a 6xHis tag at the N-terminal. Protein Description: Full Length of Mature Protein.
<b>Species</b>	Mouse
<b>Source</b>	Yeast
<b>ProteinLength</b>	2-558 aa
<b>Description</b>	Besides it's role as a glycolytic enzyme, mammalian GPI can function as a tumor-secreted cytokine and an angiogenic factor (AMF) that stimulates endothelial cell motility. GPI is also a neurotrophic factor (Neuroleukin) for spinal and sensory neurons.
<b>Form</b>	Tris-based buffer,50% glycerol
<b>Molecular Mass</b>	64.6 kDa
<b>AA Sequence</b>	AALTRNPQFQKLEWHRANSANLKLRELFADPERFNNFSLNLTNHHGILVDYSKN LVNKEVMQMLVELAKSRGVEAARDNMFSGSKINYTENRAVLHVALRNRSNTPIKVD GKDVMPEVNRVLDKMKSFQVRSGDWKGYTGKSITDIINIGIGGSDLGPLMVTEAL KPYSKGGPRVWFVSNIDGTHIAKTLASLSPETSLFIIASKTFTTQETITNAETAKEWFL EAAKDPSAVAKHFVALSTNTAKVKEFGIDPQNMFEFWDWVGGRYSLWSAIGLSIAL HVGFDHFEQLLSGAHWMDQHFLKTPLEKNAPVLLALLGIWYINCYGCETHALLPYDQ

 Tel: 1-631-559-9269 1-516-512-3133

 Email: [info@creative-biomart.com](mailto:info@creative-biomart.com)  Fax: 1-631-938-8127

 45-1 Ramsey Road, Shirley, NY 11967, USA

YMRFAAYFQQGDMESNGKYITKSGARVDHQTGPIVWGEPGTNGQHAFYQLIHQG  
 TKMIPCDFLIPVQTQHPPIRKGLHHKILLANFLAQTEALMKGKLPPEARKELQAAGKSP  
 EDLEKLLPHKVFEGNRPTNSIVFTKLTPFILGALIAMYEHKIFVQGIMWDINSFDQWGV  
 ELGKQLAKKIEPELEGSSAVTSHDSSTNGLISFIKQQRDTKLE

**Purity** > 90% as determined by SDS-PAGE.

**Notes** Repeated freezing and thawing is not recommended. Store working aliquots at 4 centigrade for up to one week.

**Storage** The shelf life is related to many factors, storage state, buffer ingredients, storage temperature and the stability of the protein itself. Generally, the shelf life of liquid form is 6 months at -20 centigrade/-80 centigrade. The shelf life of lyophilized form is 12 months at -20 centigrade/-80 centigrade.

**Concentration** A hardcopy of COA with reconstitution instruction is sent along with the products.

## GENE INFORMATION

**Gene Name** [Gpi1 glucose phosphate isomerase 1 \[ Mus musculus \(house mouse\) \]](#)

**Official Symbol** [GPI1](#)

**Synonyms** MF; NK; Amf; Gpi; Nilk; Org; Pgi; Phi; Gpi-1; Gpi1s; Gpi-1r; Gpi-1s; Gpi-1t; Gpi1-r; Gpi1-s; Gpi1-t; NK/GPI;

**Gene ID** [14751](#)

**mRNA Refseq** [NM\\_008155](#)

**Protein Refseq** [NP\\_032181](#)

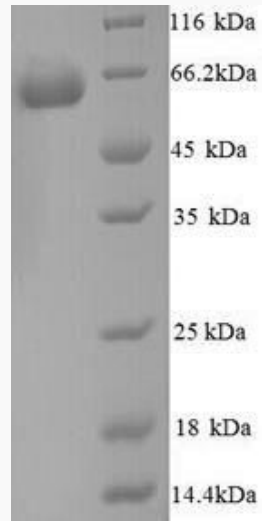
 Tel: 1-631-559-9269 1-516-512-3133

 Email: [info@creative-biomart.com](mailto:info@creative-biomart.com)  Fax: 1-631-938-8127

 45-1 Ramsey Road, Shirley, NY 11967, USA

UniProt ID

P06745



(Tris-Glycine gel) Discontinuous SDS-PAGE (reduced) with 5% enrichment gel and 15% separation gel.

Tel: 1-631-559-9269 1-516-512-3133

Email: [info@creative-biomart.com](mailto:info@creative-biomart.com) Fax: 1-631-938-8127

45-1 Ramsey Road, Shirley, NY 11967, USA