

## Recombinant Human GPIHBP1 Protein, His-tagged

Cat. No. GPIHBP1-2210H Lot. No. (See product label)

### SPECIFICATION

<b>Product Overview</b>	Recombinant Human GPIHBP1 Protein (Gln21-Gly151) with a N-His tag was expressed in E. coli.
<b>Species</b>	Human
<b>Source</b>	E.coli
<b>ProteinLength</b>	Gln21-Gly151
<b>Description</b>	This gene encodes a capillary endothelial cell protein that facilitates the lipolytic processing of triglyceride-rich lipoproteins. The encoded protein is a glycosylphosphatidylinositol-anchored protein that is a member of the lymphocyte antigen 6 (Ly6) family. This protein plays a major role in transporting lipoprotein lipase (LPL) from the subendothelial spaces to the capillary lumen. Mutations in this gene are the cause of hyperlipoproteinemia, type 1D. Alternate splicing results in multiple transcript variants.
<b>Form</b>	Freeze-dried powder
<b>Molecular Mass</b>	Predicted Molecular Mass: 18.4 kDa Accurate Molecular Mass: 21 kDa
<b>Endotoxin</b>	<1.0 EU per 1g (determined by the LAL method).
<b>Purity</b>	> 95%

 Tel: 1-631-559-9269 1-516-512-3133

 Email: [info@creative-biomart.com](mailto:info@creative-biomart.com)  Fax: 1-631-938-8127

 45-1 Ramsey Road, Shirley, NY 11967, USA

<b>Applications</b>	Positive Control; Immunogen; SDS-PAGE; WB.
<b>Stability</b>	The thermal stability is described by the loss rate. The loss rate was determined by accelerated thermal degradation test, that is, incubate the protein at 37 centigrade for 48h, and no obvious degradation and precipitation were observed. The loss rate is less than 5% within the expiration date under appropriate storage condition.
<b>Storage</b>	Avoid repeated freeze/thaw cycles. Store at 2-8 centigrade for one month. Aliquot and store at -80 centigrade for 12 months.
<b>Storage Buffer</b>	20mM Tris, 150mM NaCl, pH8.0, containing 1mM EDTA, 1mM DTT, 0.01% SKL, 5% Trehalose and Proclin300.
<b>Reconstitution</b>	Reconstitute in 20mM Tris, 150mM NaCl (pH8.0) to a concentration of 0.1-1.0 mg/mL. Do not vortex.

## GENE INFORMATION

<b>Gene Name</b>	<a href="#">GPIHBP1 glycosylphosphatidylinositol anchored high density lipoprotein binding protein 1 [ Homo sapiens (human) ]</a>
<b>Official Symbol</b>	<a href="#">GPIHBP1</a>
<b>Synonyms</b>	GPIHBP1; glycosylphosphatidylinositol anchored high density lipoprotein binding protein 1; GPI anchored high density lipoprotein binding protein 1; glycosylphosphatidylinositol-anchored high density lipoprotein-binding protein 1; GPI HBP1; LOC338328; GPI-anchored HDL-binding protein 1; high density lipoprotein-binding protein 1; GPI-HBP1;
<b>Gene ID</b>	<a href="#">338328</a>

 Tel: 1-631-559-9269 1-516-512-3133

 Email: [info@creative-biomart.com](mailto:info@creative-biomart.com)  Fax: 1-631-938-8127

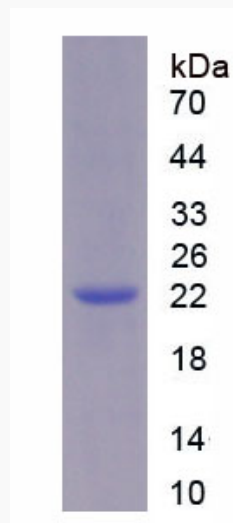
 45-1 Ramsey Road, Shirley, NY 11967, USA

mRNA Refseq [NM\\_178172](#)

Protein Refseq [NP\\_835466](#)

MIM [612757](#)

UniProt ID [Q8IV16](#)



Tel: 1-631-559-9269 1-516-512-3133

Email: [info@creative-biomart.com](mailto:info@creative-biomart.com) Fax: 1-631-938-8127

45-1 Ramsey Road, Shirley, NY 11967, USA