

Recombinant Human GPKOW Protein, GST-tagged

Cat. No. GPKOW-5159H **Lot. No.** (See product label)

SPECIFICATION

| | |
|-------------------------|---|
| Product Overview | Human GPKOW full-length ORF (NP_056513.2, 1 a.a. - 476 a.a.) recombinant protein with GST-tag at N-terminal. |
| Species | Human |
| Source | Wheat Germ |
| Description | This gene encodes a putative RNA-binding protein containing G-patch and KOW (Kyprides, Ouzounis, Woese) domains. The encoded protein interacts directly with protein kinase A and protein kinase X and is also found associated with the spliceosome. [provided by RefSeq, Aug 2013] |
| Molecular Mass | 78.6 kDa |
| AA Sequence | MADSKGVLPLTAASTAPISFGFTRTSARRRLADSGDGAGPSPEEKDFLKTVEGREL QSVKPQEAPKELVIPLIQNGHRRQPPARPPGPSTDTGALADGVVSQAVKELIAESKK SLEERENAGVDPTLAIPMIQKGCTPSGEGADSEPPRAETVPEEANYEAVPVEAYGLA MLRGMGWKPGEGIGRTFNQVVKPRVNSLRPKGLGLGANL TEAQALTPTGPSRMMPR PDEEQEKDKEDQPQGLVPGGAVVVLSPHRGLYKVEGLDPDNVRAMVRLAVGS RVVTVSEYYLRPVSQQEFDKNTLDRQQNGTASSRKT LWNQELYIQQDNSERKRK HLPDRQDGPAAKSEKAAPRSQHWLHRDLRVRFVDNMYKGGQYYNTKMIIEDVLS DTCVCRTDEGRVLEGLREDMLETLVPKAEGDRVMVVLGPQTGRVGHLLSRDRARS RALVQLPRENQVVELHYDAICQYMGPSDTDDD |
| Applications | Enzyme-linked Immunoabsorbent Assay |

 Tel: 1-631-559-9269 1-516-512-3133

 Email: info@creative-biomart.com  Fax: 1-631-938-8127

 45-1 Ramsey Road, Shirley, NY 11967, USA

Western Blot (Recombinant protein)
 Antibody Production
 Protein Array

| | |
|-----------------------|--|
| Notes | Best use within three months from the date of receipt of this protein. |
| Storage | Store at -80 centigrade. Aliquot to avoid repeated freezing and thawing. |
| Storage Buffer | 50 mM Tris-HCl, 10 mM reduced Glutathione, pH=8.0 in the elution buffer. |

GENE INFORMATION

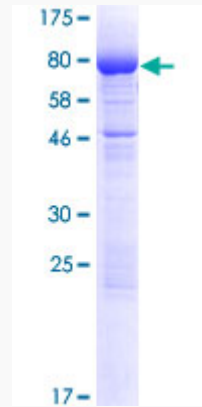
| | |
|------------------------|--|
| Gene Name | GPKOW G patch domain and KOW motifs [Homo sapiens] |
| Official Symbol | GPKOW |
| Synonyms | GPKOW; G patch domain and KOW motifs; G patch domain and KOW motifs-containing protein; G patch domain containing 5; GPATC5; GPATCH5; Spp2; T54; protein MOS2 homolog; |
| Gene ID | 27238 |
| mRNA Refseq | NM_015698 |
| Protein Refseq | NP_056513 |
| MIM | 301003 |
| UniProt ID | Q92917 |

 Tel: 1-631-559-9269 1-516-512-3133

 Email: info@creative-biomart.com  Fax: 1-631-938-8127

 45-1 Ramsey Road, Shirley, NY 11967, USA

**Quality Control
Testing**



12.5% SDS-PAGE Stained with Coomassie Blue.

 Tel: 1-631-559-9269 1-516-512-3133

 Email: info@creative-biomart.com  Fax: 1-631-938-8127

 45-1 Ramsey Road, Shirley, NY 11967, USA