

Recombinant Human GPLD1 Protein, Myc/DDK-tagged, C13 and N15-labeled

Cat. No. GPLD1-1383H Lot. No. (See product label)

SPECIFICATION

Product Overview	GPLD1 MS Standard C13 and N15-labeled recombinant protein (NP_803436) with a C-terminal MYC/DDK tag, was expressed in HEK293 cells.
Species	Human
Source	HEK293
Description	Many proteins are tethered to the extracellular face of eukaryotic plasma membranes by a glycosylphosphatidylinositol (GPI) anchor. The GPI-anchor is a glycolipid found on many blood cells. The protein encoded by this gene is a GPI degrading enzyme. Glycosylphosphatidylinositol specific phospholipase D1 hydrolyzes the inositol phosphate linkage in proteins anchored by phosphatidylinositol glycans, thereby releasing the attached protein from the plasma membrane.
Molecular Mass	17.3 kDa
AA Sequence	MSAFRLWPGLLIMLGLSLCHRGSPCGLSTHVEIGHRALEFLQLHNGRVNYRELLLEHQ DAYQAGIVFPDCFYPSICKGGKFHDVSESTHWTPFLNASVHYIRENYPLPWEKDTEK LVAFLFGITSHMAADVSWHSLGLEQGFLRTMGAIDFHGSYSEAHSAAGDFGTVYLHLL NFLVVTRTRPLEQKLISEEDLAANDILDYKDDDDKV
Purity	> 80% as determined by SDS-PAGE and Coomassie blue staining
Stability	Stable for 3 months from receipt of products under proper storage and handling

 Tel: 1-631-559-9269 1-516-512-3133

 Email: info@creative-biomart.com  Fax: 1-631-938-8127

 45-1 Ramsey Road, Shirley, NY 11967, USA

conditions.

Storage Store at -80 centigrade. Avoid repeated freeze-thaw cycles.

Concentration 50 µg/mL as determined by BCA

Storage Buffer 100 mM glycine, 25 mM Tris-HCl, pH 7.3.

GENE INFORMATION

Gene Name GPLD1 glycosylphosphatidylinositol specific phospholipase D1 [Homo sapiens (human)]

Official Symbol [GPLD1](#)

Synonyms GPLD1; glycosylphosphatidylinositol specific phospholipase D1; phosphatidylinositol-glycan-specific phospholipase D; GPI-PLD; PI-G PLD; GPI-specific phospholipase D; glycoprotein phospholipase D; phospholipase D, phosphatidylinositol-glycan-specific; glycosylphosphatidylinositol specific phospholipase D1, isoform 2; GPIPLD; PIGPLD; GPIPLDM; PIGPLD1; MGC22590;

Gene ID [2822](#)

mRNA Refseq [NM_177483](#)

Protein Refseq [NP_803436](#)

MIM [602515](#)

UniProt ID [P80108](#)

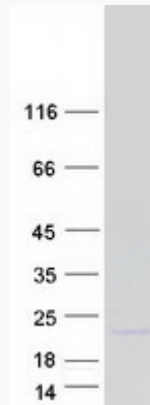
 Tel: 1-631-559-9269 1-516-512-3133

 Email: info@creative-biomart.com  Fax: 1-631-938-8127

 45-1 Ramsey Road, Shirley, NY 11967, USA



SDS-PAGE



Tel: 1-631-559-9269 1-516-512-3133

Email: info@creative-biomart.com Fax: 1-631-938-8127

45-1 Ramsey Road, Shirley, NY 11967, USA