

Recombinant Human GPLD1 Protein, His-tagged

Cat. No. GPLD1-172H Lot. No. (See product label)

SPECIFICATION

Product Overview	Recombinant Human GPLD1(Thr725~Thr1074) fused with His tag at N-terminal was expressed in E. coli.
Species	Human
Source	E.coli
ProteinLength	Thr725~Thr1074
Description	Many proteins are tethered to the extracellular face of eukaryotic plasma membranes by a glycosylphosphatidylinositol (GPI) anchor. The GPI-anchor is a glycolipid found on many blood cells. The protein encoded by this gene is a GPI degrading enzyme. Glycosylphosphatidylinositol specific phospholipase D1 hydrolyzes the inositol phosphate linkage in proteins anchored by phosphatidylinositol glycans, thereby releasing the attached protein from the plasma membrane.
Form	20mM Tris, 150mM NaCl, pH8.0, containing 1mM EDTA, 1mM DTT, 0.01% SKL, 5% Trehalose and Proclin300.
Molecular Mass	47.1kDa
Endotoxin	<1.0EU per 1ug (determined by the LAL method)
Purity	> 90%

 Tel: 1-631-559-9269 1-516-512-3133

 Email: info@creative-biomart.com  Fax: 1-631-938-8127

 45-1 Ramsey Road, Shirley, NY 11967, USA

Applications	Positive Control; Immunogen; SDS-PAGE; WB. If bio-activity of the protein is needed, please check active protein
Stability	The thermal stability is described by the loss rate. The loss rate was determined by accelerated thermal degradation test, that is, incubate the protein at 37 centigrade for 48h, and no obvious degradation and precipitation were observed. The loss rate is less than 5% within the expiration date under appropriate storage condition.
Storage	Avoid repeated freeze/thaw cycles. Store at 2-8 centigrade for one month. Aliquot and store at -80 centigrade for 12 months.
Reconstitution	Reconstitute in 20mM Tris, 150mM NaCl (pH8.0) to a concentration of 0.1-1.0 mg/mL. Do not vortex.

GENE INFORMATION

Gene Name	GPLD1 glycosylphosphatidylinositol specific phospholipase D1 [Homo sapiens]
Official Symbol	GPLD1
Synonyms	GPLD1; glycosylphosphatidylinositol specific phospholipase D1; phosphatidylinositol-glycan-specific phospholipase D; GPI-PLD; PI-G PLD; GPI-specific phospholipase D; glycoprotein phospholipase D; phospholipase D, phosphatidylinositol-glycan-specific; glycosylphosphatidylinositol specific phospholipase D1, isoform 2; GPIPLD; PIGPLD; GPIPLDM; PIGPLD1; MGC22590;
Gene ID	2822
mRNA Refseq	NM_001503
Protein Refseq	NP_001494

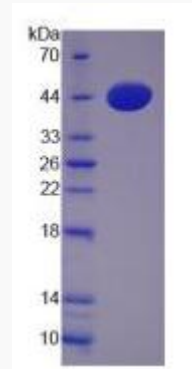
 Tel: 1-631-559-9269 1-516-512-3133

 Email: info@creative-biomart.com  Fax: 1-631-938-8127

 45-1 Ramsey Road, Shirley, NY 11967, USA

MIM 602515

UniProt ID P80108



 Tel: 1-631-559-9269 1-516-512-3133

 Email: info@creative-biomart.com  Fax: 1-631-938-8127

 45-1 Ramsey Road, Shirley, NY 11967, USA