

Recombinant Human GPLD1 Protein (Met496-Asp840), N-His tagged

Cat. No. GPLD1-2980H **Lot. No.** (See product label)

SPECIFICATION

Product Overview	Recombinant human GPLD1 (Met496-Asp840) protein fused with the N-His tag was expressed in E. coli.
Species	Human
Source	E.coli
ProteinLength	Met496-Asp840
Molecular Mass	39.17 kDa
Purity	>90 % as determined by SDS-PAGE.
Notes	For research use only.
Storage	Use a manual defrost freezer and avoid repeated freeze thaw cycles. Store at 2 to 8 centigrade for one week. Store at -20 to -80 centigrade for twelve months from the date of receipt.
Storage Buffer	0.01M PBS, pH 7.4, 0.02 % NLS
Reconstitution	Reconstitute in sterile water for a stock solution.
Shipping	In general, proteins are provided as lyophilized powder/frozen liquid. They are

 Tel: 1-631-559-9269 1-516-512-3133

 Email: info@creative-biomart.com  Fax: 1-631-938-8127

 45-1 Ramsey Road, Shirley, NY 11967, USA

shipped out with dry ice/blue ice unless customers require otherwise.

GENE INFORMATION

Gene Name [GPLD1 glycosylphosphatidylinositol specific phospholipase D1 \[Homo sapiens \(human\) \]](#)

Official Symbol [GPLD1](#)

Synonyms [GPLD1](#); glycosylphosphatidylinositol specific phospholipase D1; phosphatidylinositol-glycan-specific phospholipase D; GPI-PLD; PI-G PLD; GPI-specific phospholipase D; glycoprotein phospholipase D; phospholipase D, phosphatidylinositol-glycan-specific; glycosylphosphatidylinositol specific phospholipase D1, isoform 2; GPIPLD; PIGPLD; GPIPLDM; PIGPLD1; MGC22590;

Gene ID [2822](#)

mRNA Refseq [NM_001503](#)

Protein Refseq [NP_001494](#)

MIM [602515](#)

UniProt ID [P80108](#)

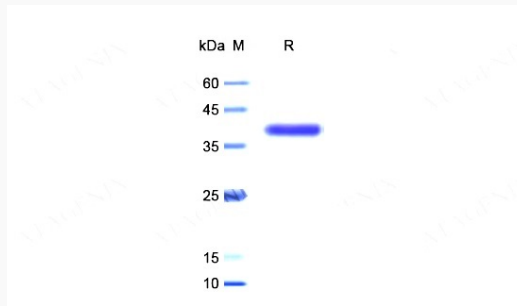
 Tel: 1-631-559-9269 1-516-512-3133

 Email: info@creative-biomart.com  Fax: 1-631-938-8127

 45-1 Ramsey Road, Shirley, NY 11967, USA



SDS-PAGE



Tel: 1-631-559-9269 1-516-512-3133

Email: info@creative-biomart.com Fax: 1-631-938-8127

45-1 Ramsey Road, Shirley, NY 11967, USA