

# Recombinant Human GPLD1 Protein, MYC/DDK-tagged, C13 and N15-labeled

Cat. No. GPLD1-434H Lot. No. (See product label)

## SPECIFICATION

<b>Product Overview</b>	GPLD1 MS Standard C13 and N15-labeled recombinant protein (NP_001494) with a C-terminal MYC/DDK tag, was expressed in HEK293 cells.
<b>Species</b>	Human
<b>Source</b>	HEK293
<b>Description</b>	<p>Many proteins are tethered to the extracellular face of eukaryotic plasma membranes by a glycosylphosphatidylinositol (GPI) anchor. The GPI-anchor is a glycolipid found on many blood cells. The protein encoded by this gene is a GPI degrading enzyme. Glycosylphosphatidylinositol specific phospholipase D1 hydrolyzes the inositol phosphate linkage in proteins anchored by phosphatidylinositol glycans, thereby releasing the attached protein from the plasma membrane. [provided by RefSeq, Jul 2008]</p>
<b>Molecular Mass</b>	92.35 kDa
<b>AA Sequence</b>	<p>MSAFRLWPGLLIMLGLSLCHRGSPLSTHVEIGHRALEFLQLHNGRVNYRELLLEHQ            DAYQAGIVFPDCFYPSICKGGKFHDVSESTHWTPFLNASVHYIRENYPLPWEKDTEK            LVAFLFGITSHMAADVSWHSLGLEQGFLRTMGAIDFHGSYSEAHSAAGDFGGDVLSQ            FEFNFNYLARRWYVPVKDLLGIYEKLYGRKVITENVIVDCSHIQFLEMYGEMLAVSKL            YPTYSTKSPFLVEQFQEYFLGGLDDMAFWSTNIYHLTSFMLENGTSDCNLPENPLFI            ACGGQQNHTQGSKMQKNDFHRNLTTSLTESVDRNINYTERGVFFSVNSWTPDSMS</p>

 Tel: 1-631-559-9269 1-516-512-3133

 Email: [info@creative-biomart.com](mailto:info@creative-biomart.com)  Fax: 1-631-938-8127

 45-1 Ramsey Road, Shirley, NY 11967, USA

FIYKALERNIRTMFIGGSQLSQKHVSSPLASYFLSFPYARLGWAMTSADLNQDGHGD  
 LVVGAPGYSRPGHIHIGRVYLIYGNDLGLPPVDLDDKEAHRILEGFQPSGRFGSALA  
 VLDFNVDGVPDLAVGAPSVGSEQLTYKGAVYVYFGSKQGGMSSSPNITISCQDIYC  
 NLGWTLAADVNGDSEPDLVIGSPFAPGGGKQKGIVAAFYSGPSLSDKEKLNVEAA  
 NWTVRGEEDFSWFGYSLHGVTVDNRTLLL VGSPTWKNASRLGHLLHIRDEKKS LGR  
 VYGYFPPNGQSWFTISGDKAMGKLGTSLSGGHVL MNGTLKQVLLVGAPTYDDVSKV  
 AFLTVTLHQGGATRMALISDAQPLLLSTFSGDRRFSRFGGVLHLSLDDDDGLDEIIM  
 AAPLRIADVTSGLIGGEDGRVYVYNGKETT LGDMTGKCKSWITPCPEEKAQYVLISP  
 EASSRFGSSLITVRSKAKNQVIAAGRSSLGARLSGALHVYSLGSDTRTRPLEQKLIS  
 EEDLAANDILDYKDDDDKV

**Purity** > 80% as determined by SDS-PAGE and Coomassie blue staining

**Stability** Stable for 3 months from receipt of products under proper storage and handling conditions.

**Storage** Store at -80 centigrade. Avoid repeated freeze-thaw cycles.

**Concentration** 50 µg/mL as determined by BCA

**Storage Buffer** 100 mM glycine, 25 mM Tris-HCl, pH 7.3.

## GENE INFORMATION

**Gene Name** GPLD1 glycosylphosphatidylinositol specific phospholipase D1 [ Homo sapiens (human) ]

**Official Symbol** GPLD1

**Synonyms** GPLD1; glycosylphosphatidylinositol specific phospholipase D1; phosphatidylinositol-glycan-specific phospholipase D; GPI-PLD; PI-G PLD; GPI-specific phospholipase D;

 Tel: 1-631-559-9269 1-516-512-3133

 Email: [info@creative-biomart.com](mailto:info@creative-biomart.com)  Fax: 1-631-938-8127

 45-1 Ramsey Road, Shirley, NY 11967, USA

glycoprotein phospholipase D; phospholipase D, phosphatidylinositol-glycan-specific; glycosylphosphatidylinositol specific phospholipase D1, isoform 2; GPIPLD; PIGPLD; GPIPLDM; PIGPLD1; MGC22590;

**Gene ID** [2822](#)

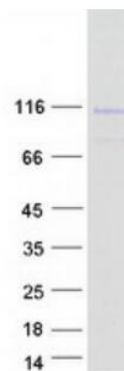
**mRNA Refseq** [NM\\_001503](#)

**Protein Refseq** [NP\\_001494](#)

**MIM** [602515](#)

**UniProt ID** [P80108](#)

#### SDS-PAGE



 Tel: 1-631-559-9269 1-516-512-3133

 Email: [info@creative-biomart.com](mailto:info@creative-biomart.com)  Fax: 1-631-938-8127

 45-1 Ramsey Road, Shirley, NY 11967, USA