

Recombinant Human GPM6A Protein, Myc/DDK-tagged, C13 and N15-labeled

Cat. No. GPM6A-3527H Lot. No. (See product label)

SPECIFICATION

Product Overview	GPM6A MS Standard C13 and N15-labeled recombinant protein (NP_963886) with a C-terminal MYC/DDK tag, was expressed in HEK293 cells.
Species	Human
Source	HEK293
Description	Involved in neuronal differentiation, including differentiation and migration of neuronal stem cells. Plays a role in neuronal plasticity and is involved in neurite and filopodia outgrowth, filopodia motility and probably synapse formation. GPM6A-induced filopodia formation involves mitogen-activated protein kinase (MAPK) and Src signaling pathways. May be involved in neuronal NGF-dependent Ca ²⁺ influx. May be involved in regulation of endocytosis and intracellular trafficking of G-protein-coupled receptors (GPCRs); enhances internalization and recycling of mu-type opioid receptor.
Molecular Mass	29.7 kDa
AA Sequence	MGCFECCIKCLGGIPYASLIATILLYAGVALFCGCGHEALSGTVNILQTYFEMARTAG DTLDVFTMIDIFKYVIYGIAAAFFVYGILLMVEGFFTTGAIKDLYGDFKITTCGRCVSAW FIMLTYLFLAWLGVTAFTSLPVYMYFNLWTICRNTTLVEGANLCLDLRQFGIVTIGE EKKICTVSENFLRMCESTELNMTFHLFIVALAGAGAAVIAMVHYLMVLSANWAYVKD ACRMQKYEDIKSKEEQELHDIHSTRSKERLNAYTTRTRPLEQKLISEEDLAANDILDY

 Tel: 1-631-559-9269 1-516-512-3133

 Email: info@creative-biomart.com  Fax: 1-631-938-8127

 45-1 Ramsey Road, Shirley, NY 11967, USA



	KDDDDKV
Purity	> 80% as determined by SDS-PAGE and Coomassie blue staining
Stability	Stable for 3 months from receipt of products under proper storage and handling conditions.
Storage	Store at -80 centigrade. Avoid repeated freeze-thaw cycles.
Concentration	50 µg/mL as determined by BCA
Storage Buffer	100 mM glycine, 25 mM Tris-HCl, pH 7.3.

GENE INFORMATION

Gene Name	GPM6A glycoprotein M6A [Homo sapiens (human)]
Official Symbol	GPM6A
Synonyms	GPM6A; glycoprotein M6A; GPM6; neuronal membrane glycoprotein M6-a; M6A;
Gene ID	2823
mRNA Refseq	NM_201592
Protein Refseq	NP_963886
MIM	601275
UniProt ID	P51674

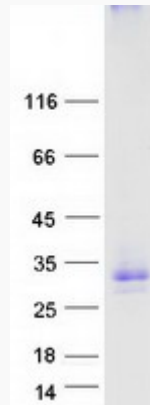
Tel: 1-631-559-9269 1-516-512-3133

Email: info@creative-biomart.com Fax: 1-631-938-8127

45-1 Ramsey Road, Shirley, NY 11967, USA



SDS-PAGE



Tel: 1-631-559-9269 1-516-512-3133

Email: info@creative-biomart.com Fax: 1-631-938-8127

45-1 Ramsey Road, Shirley, NY 11967, USA