

Recombinant Human GPM6A Protein, Myc/DDK-tagged, C13 and N15-labeled

Cat. No. GPM6A-5560H Lot. No. (See product label)

SPECIFICATION

Product Overview	GPM6A MS Standard C13 and N15-labeled recombinant protein (NP_963885) with a C-terminal MYC/DDK tag, was expressed in HEK293 cells.
Species	Human
Source	HEK293
Description	GPM6A (Glycoprotein M6A) is a Protein Coding gene. Diseases associated with GPM6A include Megalencephalic Leukoencephalopathy With Subcortical Cysts 1 and Epileptic Encephalopathy, Early Infantile, 28. Gene Ontology (GO) annotations related to this gene include calcium channel activity. An important paralog of this gene is GPM6B.
Molecular Mass	31.2 kDa
AA Sequence	MEENMEEGQTQKGCFECCIKCLGGIPYASLIATILLYAGVALFCGCGHEALSGTVNIL QTYFEMARTAGDTLDVFTMIDIFKYVIYGIAAAFFVYGILLMVEGFFTTGAIKDLYGDF KITTCGRCVSAWFIMLTLYFMLAWLGVTAFTSLPVYMYFNLWTCRNTTLVEGANLCL DLRQFGIVTIGEEKKICTVSENFLRMCESTELNMTFHLFIVALAGAGAAVIAMVHYLMV LSANWAYVKDACRMQKYEDIKSKEEQELHDIHSTRSKERLNAVYTRTRPLEQKLISE EDLAANDILDYKDDDDKV
Purity	> 80% as determined by SDS-PAGE and Coomassie blue staining

 Tel: 1-631-559-9269 1-516-512-3133

 Email: info@creative-biomart.com  Fax: 1-631-938-8127

 45-1 Ramsey Road, Shirley, NY 11967, USA

Stability	Stable for 3 months from receipt of products under proper storage and handling conditions.
Storage	Store at -80 centigrade. Avoid repeated freeze-thaw cycles.
Concentration	50 µg/mL as determined by BCA
Storage Buffer	100 mM glycine, 25 mM Tris-HCl, pH 7.3.

GENE INFORMATION

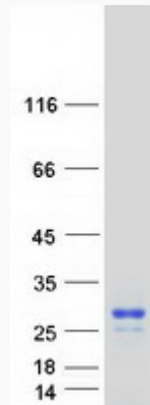
Gene Name	GPM6A glycoprotein M6A [Homo sapiens (human)]
Official Symbol	GPM6A
Synonyms	GPM6A; glycoprotein M6A; GPM6; neuronal membrane glycoprotein M6-a; M6A;
Gene ID	2823
mRNA Refseq	NM_201591
Protein Refseq	NP_963885
MIM	601275
UniProt ID	P51674

 Tel: 1-631-559-9269 1-516-512-3133

 Email: info@creative-biomart.com  Fax: 1-631-938-8127

 45-1 Ramsey Road, Shirley, NY 11967, USA

SDS-PAGE



 Tel: 1-631-559-9269 1-516-512-3133

 Email: info@creative-biomart.com  Fax: 1-631-938-8127

 45-1 Ramsey Road, Shirley, NY 11967, USA