

## Recombinant Human GPM6B Protein, GST-tagged

Cat. No. GPM6B-5161H Lot. No. (See product label)

### SPECIFICATION

<b>Product Overview</b>	Human GPM6B full-length ORF ( NP_001001996.1, 1 a.a. - 305 a.a.) recombinant protein with GST-tag at N-terminal.
<b>Species</b>	Human
<b>Source</b>	Wheat Germ
<b>Description</b>	This gene encodes a membrane glycoprotein that belongs to the proteolipid protein family. Proteolipid protein family members are expressed in most brain regions and are thought to be involved in cellular housekeeping functions, such as membrane trafficking and cell-to-cell communication. [provided by RefSeq]
<b>Molecular Mass</b>	59.9 kDa
<b>AA Sequence</b>	MKPAMETAAEENTEQSQERKVNSRAEMEIGRYHWMYPGSKNHQYHPVPTLGDRASPLSSPGCFECCIKCLGGVPYASLVATILCFSGVALFCGCGHVALAGTVAILEQHFSTNASDHALLSEVIQLMQYVIYGIASFFFLYGIILLAEGFYTTSVAVKELHGFEKTTACGRCSGMFVFLTYVLGVAVLGVFGFSAVPVFMFYNIWSTCEVIKSPQTNGTTGVEQICVDIRQYGIIPWNAFPGKICGSALENICNTNEFYMSYHLFIVACAGAGATVIALLIYMMATTYNYAVLKFKSREDCCTKF
<b>Applications</b>	Enzyme-linked Immunoabsorbent Assay Western Blot (Recombinant protein) Antibody Production Protein Array

 Tel: 1-631-559-9269 1-516-512-3133

 Email: [info@creative-biomart.com](mailto:info@creative-biomart.com)  Fax: 1-631-938-8127

 45-1 Ramsey Road, Shirley, NY 11967, USA

<b>Notes</b>	Best use within three months from the date of receipt of this protein.
<b>Storage</b>	Store at -80 centigrade. Aliquot to avoid repeated freezing and thawing.
<b>Storage Buffer</b>	50 mM Tris-HCl, 10 mM reduced Glutathione, pH=8.0 in the elution buffer.

## GENE INFORMATION

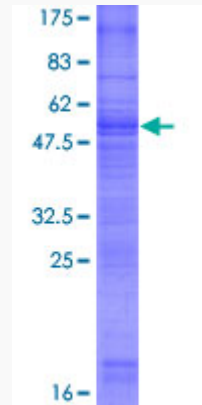
<b>Gene Name</b>	GPM6B glycoprotein M6B [ Homo sapiens ]
<b>Official Symbol</b>	GPM6B
<b>Synonyms</b>	GPM6B; glycoprotein M6B; neuronal membrane glycoprotein M6-b; M6B; MGC17150; MGC54284; protolipid M6B;
<b>Gene ID</b>	2824
<b>mRNA Refseq</b>	NM_001001994
<b>Protein Refseq</b>	NP_001001994
<b>MIM</b>	300051
<b>UniProt ID</b>	Q13491

 Tel: 1-631-559-9269 1-516-512-3133

 Email: [info@creative-biomart.com](mailto:info@creative-biomart.com)  Fax: 1-631-938-8127

 45-1 Ramsey Road, Shirley, NY 11967, USA

**Quality Control  
Testing**



12.5% SDS-PAGE Stained with Coomassie Blue.

 Tel: 1-631-559-9269 1-516-512-3133

 Email: [info@creative-biomart.com](mailto:info@creative-biomart.com)  Fax: 1-631-938-8127

 45-1 Ramsey Road, Shirley, NY 11967, USA