

Recombinant Human GPN1 protein, GST-tagged

Cat. No. GPN1-13429H Lot. No. (See product label)

SPECIFICATION

Product Overview	Recombinant Human GPN1 protein(66-374 aa), fused with N-terminal GST tag, was expressed in E.coli.
Species	Human
Source	E.coli
ProteinLength	66-374 aa
Form	The purified protein was lyophilized from sterile phosphate-buffered saline (PBS: 58 mM Na ₂ HPO ₄ , 17 mM NaH ₂ PO ₄ , 68 mM NaCl, pH 8.0). Prior to lyophilization, 5% (w/v) trehalose and 5% (w/v) mannitol were incorporated as cryoprotective excipients. The protein was eluted with a buffer containing 100 mM reduced glutathione (GSH).
AASequence	ANIDIRDTVKYKEVMKQYGLGPNGGIVTSLNLFATRFDQVMKFIEKAQNMSKYVLIDT PGQIEVFTWSASGTIITEALASSFPTVVIYVMDTSRSTNPVTFMSNMLYACSYLYKTKL PFIVVMNKTDIIDHSFAVEWMQDFEAFQDALNQETTYVSNLTRSMSLVLDEFYSSLR VVGVSAVLGTGLDELFFVQVTSAAEEYEREYRPEYERLKKSLANAESQQQREQLERL RKDMGSVALDAGTAKDSLSPVLHPSDLILTRGTLDEEEDDEADSDTDDIDHRVTEESH EPAFQNFMQESMAQYWKRNNK
Purity	85%, by SDS-PAGE with Coomassie Brilliant Blue staining.
Storage	Store at 2-8°C for 1-2 weeks. Aliquot and store at -20°C to -80°C for up to 3 months,

 Tel: 1-631-559-9269 1-516-512-3133

 Email: info@creative-biomart.com  Fax: 1-631-938-8127

 45-1 Ramsey Road, Shirley, NY 11967, USA

reconstitution with sterile water and addition of an equal volume of glycerol. Avoid repeat freeze-thaw cycles.

Reconstitution

Dissolve the product in 200 µl sterile water to achieve a working concentration of 0.25 g/µl. If experimental compatibility allows, mix the aqueous solution with an equal volume of glycerol (1:1 ratio) after initial reconstitution.

GENE INFORMATION

Gene Name [GPN1 GPN-loop GTPase 1 \[Homo sapiens \]](#)

Official Symbol [GPN1](#)

Synonyms

GPN1; GPN-loop GTPase 1; XAB1, XPA binding protein 1 , XPA binding protein 1, GTPase; ATPBD1A; MBDIN; NTPBP; RNA polymerase II associated protein 4; RPAP4; XPA-binding protein 1; ATP(GTP)-binding protein; MBD2-interacting protein; XPA binding protein 1, GTPase; XAB1; FLJ51176;

Gene ID [11321](#)

mRNA Refseq [NM_001145047](#)

Protein Refseq [NP_001138519](#)

MIM [611479](#)

UniProt ID [Q9HCN4](#)

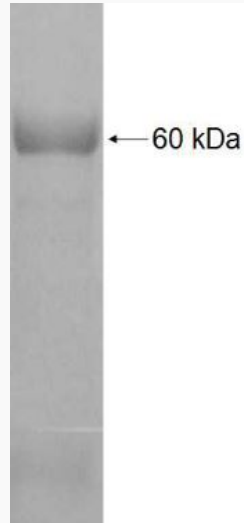
 Tel: 1-631-559-9269 1-516-512-3133

 Email: info@creative-biomart.com  Fax: 1-631-938-8127

 45-1 Ramsey Road, Shirley, NY 11967, USA



SDS-PAGE



Tel: 1-631-559-9269 1-516-512-3133

Email: info@creative-biomart.com Fax: 1-631-938-8127

45-1 Ramsey Road, Shirley, NY 11967, USA