

Recombinant Human GPN2 Protein, Myc/DDK-tagged, C13 and N15-labeled

Cat. No. GPN2-5565H **Lot. No.** (See product label)

SPECIFICATION

Product Overview	GPN2 MS Standard C13 and N15-labeled recombinant protein (NP_060536) with a C-terminal MYC/DDK tag, was expressed in HEK293 cells.
Species	Human
Source	HEK293
Description	GPN2 (GPN-Loop GTPase 2) is a Protein Coding gene. Gene Ontology (GO) annotations related to this gene include nucleotide binding and hydrolase activity. An important paralog of this gene is GPN3.
Molecular Mass	34.5 kDa
AA Sequence	MAGAAPTTAFGQAVIGPPGSGKTTYCLGMSEFLRALGRRVAVVNLDPANEGLPYEC AVDVGELVGLGDVMDALRLGPNGGLLYCMEYLEANLDWLRAKLDPLRGHYFLFDC PGQVELCTHHGALRSIFSQMAQWDLRLTAVHLVDSHYCTDPAKFISVLCTSLATMLH VELPHINLLSKMDLIEHYGKLAFNLDYYTEVLDLSYLLDHLASDPFFRHYRQLNEKLV RLIEDYSLVSFIPLNIQDKESIQRVLQAVDKANGYCFGAQEQRSLAMMSAAMGADF HFSSTLGIQEKYLAPSNQSVEQEAMQLTRTRPLEQKLISEEDLAANDILDYKDDDDKV
Purity	> 80% as determined by SDS-PAGE and Coomassie blue staining
Stability	Stable for 3 months from receipt of products under proper storage and handling conditions.

 Tel: 1-631-559-9269 1-516-512-3133

 Email: info@creative-biomart.com  Fax: 1-631-938-8127

 45-1 Ramsey Road, Shirley, NY 11967, USA

Storage	Store at -80 centigrade. Avoid repeated freeze-thaw cycles.
----------------	---

Concentration	50 µg/mL as determined by BCA
----------------------	-------------------------------

Storage Buffer	100 mM glycine, 25 mM Tris-HCl, pH 7.3.
-----------------------	---

GENE INFORMATION

Gene Name	GPN2 GPN-loop GTPase 2 [Homo sapiens (human)]
------------------	---

Official Symbol	GPN2
------------------------	------

Synonyms	GPN2; GPN-loop GTPase 2; ATP binding domain 1 family, member B, ATPBD1B; FLJ10349; ATP-binding domain 1 family member B; ATP binding domain 1 family, member B; ATPBD1B;
-----------------	--

Gene ID	54707
----------------	-------

mRNA Refseq	NM_018066
--------------------	-----------

Protein Refseq	NP_060536
-----------------------	-----------

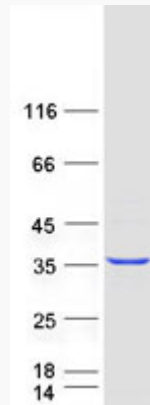
UniProt ID	Q9H9Y4
-------------------	--------

 Tel: 1-631-559-9269 1-516-512-3133

 Email: info@creative-biomart.com  Fax: 1-631-938-8127

 45-1 Ramsey Road, Shirley, NY 11967, USA

SDS-PAGE



 Tel: 1-631-559-9269 1-516-512-3133

 Email: info@creative-biomart.com  Fax: 1-631-938-8127

 45-1 Ramsey Road, Shirley, NY 11967, USA