

Recombinant Human glycoprotein nmb Protein, His tagged

Cat. No. GPNMB-072H Lot. No. (See product label)

SPECIFICATION

Product Overview	Recombinant human Osteoactivin/GPNMB protein (Q14956) (Ala 22-Pro 486) with a His tag at the C-terminus was expressed in HEK293.
Species	Human
Source	HEK293
ProteinLength	22-486aa
Description	The protein encoded by this gene is a type I transmembrane glycoprotein which shows homology to the pMEL17 precursor, a melanocyte-specific protein. GPNMB shows expression in the lowly metastatic human melanoma cell lines and xenografts but does not show expression in the highly metastatic cell lines. GPNMB may be involved in growth delay and reduction of metastatic potential. Two transcript variants encoding different isoforms have been found for this gene.
Tag	C-His
Molecular Mass	53.4 kDa
Endotoxin	Less than 1.0 EU/μg by the LAL method.
Purity	>95% as determined by SDS-PAGE.
Storage	Please avoid repeated freeze-thaw cycles. Samples are stable for up to twelve

 Tel: 1-631-559-9269 1-516-512-3133

 Email: info@creative-biomart.com  Fax: 1-631-938-8127

 45-1 Ramsey Road, Shirley, NY 11967, USA

months from date of receipt at -20 to -80 centigrade. It is recommended that aliquot the reconstituted solution to minimize freeze-thaw cycles.

Storage Buffer

Lyophilized from a 0.2 µm filtered solution of PBS, pH7.4, 5% Trehalose, 5% mannitol.

Reconstitution

Reconstitute at 250 µg/mL in sterile water.

GENE INFORMATION

Gene Name

GPNMB glycoprotein nmb [Homo sapiens (human)]

Official Symbol

GPNMB

Synonyms

GPNMB; glycoprotein (transmembrane) nmb; transmembrane glycoprotein NMB; glycoprotein NMB; glycoprotein nmb like protein; HGFIN; NMB; osteoactivin; transmembrane glycoprotein; glycoprotein nmb-like protein; transmembrane glycoprotein HGFIN;

Gene ID

10457

mRNA Refseq

NM_001005340

Protein Refseq

NP_001005340

MIM

604368

UniProt ID

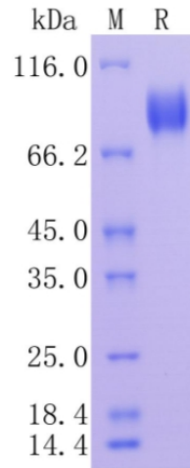
Q14956

 Tel: 1-631-559-9269 1-516-512-3133

 Email: info@creative-biomart.com  Fax: 1-631-938-8127

 45-1 Ramsey Road, Shirley, NY 11967, USA

**Protein on SDS-
PAGE under
reducing (R)
condition.**



 Tel: 1-631-559-9269 1-516-512-3133

 Email: info@creative-biomart.com  Fax: 1-631-938-8127

 45-1 Ramsey Road, Shirley, NY 11967, USA