

Recombinant Human GPR119 Protein, GST-tagged

Cat. No. GPR119-5177H Lot. No. (See product label)

SPECIFICATION

Product Overview	Human GPR119 partial ORF (NP_848566.1, 236 a.a. - 335 a.a.) recombinant protein with GST tag at N-terminal.
Species	Human
Source	Wheat Germ
ProteinLength	236-335 a.a.
Description	GPR119 is a member of the rhodopsin family of G protein-coupled receptors (GPRs) (Fredriksson et al., 2003 [PubMed 14623098]).[supplied by OMIM
Molecular Mass	36.63 kDa
AA Sequence	LSWTPFLITGIVQVACQECHLYLVLERYLWLLGVGNSLLNPLIYAYWQKEVRLQLYH MALGVKKVLTSFLLFLSARNCGPERPRESSCHIVTISSEFDG
Applications	Enzyme-linked Immunoabsorbent Assay Western Blot (Recombinant protein) Antibody Production Protein Array
Notes	Best use within three months from the date of receipt of this protein.
Storage	Store at -80 centigrade. Aliquot to avoid repeated freezing and thawing.

 Tel: 1-631-559-9269 1-516-512-3133

 Email: info@creative-biomart.com  Fax: 1-631-938-8127

 45-1 Ramsey Road, Shirley, NY 11967, USA

Storage Buffer 50 mM Tris-HCl, 10 mM reduced Glutathione, pH=8.0 in the elution buffer.

GENE INFORMATION

Gene Name GPR119 G protein-coupled receptor 119 [Homo sapiens]

Official Symbol GPR119

Synonyms GPR119; G protein-coupled receptor 119; glucose-dependent insulinotropic receptor; GPCR2; hGPCR2; G-protein coupled receptor 2; G-protein coupled receptor 119; MGC119957;

Gene ID 139760

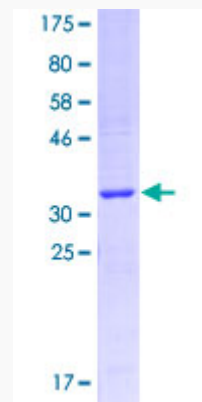
mRNA Refseq NM_178471

Protein Refseq NP_848566

MIM 300513

UniProt ID Q8TDV5

Quality Control Testing



Tel: 1-631-559-9269 1-516-512-3133

Email: info@creative-biomart.com Fax: 1-631-938-8127

45-1 Ramsey Road, Shirley, NY 11967, USA



12.5% SDS-PAGE Stained with Coomassie Blue

 Tel: 1-631-559-9269 1-516-512-3133

 Email: info@creative-biomart.com  Fax: 1-631-938-8127

 45-1 Ramsey Road, Shirley, NY 11967, USA