

Recombinant Human GPR128 Protein, GST-tagged

Cat. No. GPR128-5180H Lot. No. (See product label)

SPECIFICATION

Product Overview	Human GPR128 partial ORF (NP_116176.1, 31 a.a. - 130 a.a.) recombinant protein with GST tag at N-terminal.
Species	Human
Source	Wheat Germ
ProteinLength	31-130 a.a.
Description	ADGRG7 (Adhesion G Protein-Coupled Receptor G7) is a Protein Coding gene. Diseases associated with ADGRG7 include Fibrogenesis Imperfecta Ossium. GO annotations related to this gene include G-protein coupled receptor activity and transmembrane signaling receptor activity. An important paralog of this gene is ADGRF5.
Molecular Mass	36.63 kDa
AA Sequence	RIVIRIQRGKSTSSSSTPTEFCRNGGTWENGRICICTEEWKGLRCTIANFCENSTYMG FTFARIPVGRYGPLQTCGKDTPNAGNPMAVRLCSLSLYGEIE
Applications	Enzyme-linked Immunoabsorbent Assay Western Blot (Recombinant protein) Antibody Production Protein Array

 Tel: 1-631-559-9269 1-516-512-3133

 Email: info@creative-biomart.com  Fax: 1-631-938-8127

 45-1 Ramsey Road, Shirley, NY 11967, USA

Notes	Best use within three months from the date of receipt of this protein.
Storage	Store at -80 centigrade. Aliquot to avoid repeated freezing and thawing.
Storage Buffer	50 mM Tris-HCl, 10 mM reduced Glutathione, pH=8.0 in the elution buffer.

GENE INFORMATION

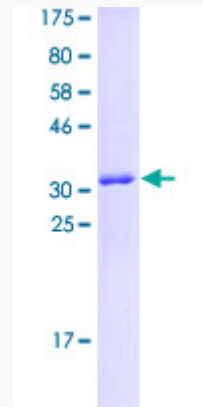
Gene Name	GPR128 G protein-coupled receptor 128 [Homo sapiens]
Official Symbol	GPR128
Synonyms	GPR128; G protein-coupled receptor 128
Gene ID	84873
mRNA Refseq	NM_032787
Protein Refseq	NP_116176
MIM	612307
UniProt ID	Q96K78

 Tel: 1-631-559-9269 1-516-512-3133

 Email: info@creative-biomart.com  Fax: 1-631-938-8127

 45-1 Ramsey Road, Shirley, NY 11967, USA

**Quality Control
Testing**



12.5% SDS-PAGE Stained with Coomassie Blue

 Tel: 1-631-559-9269 1-516-512-3133

 Email: info@creative-biomart.com  Fax: 1-631-938-8127

 45-1 Ramsey Road, Shirley, NY 11967, USA