

Recombinant Human GPR135 Protein, GST-tagged

Cat. No. GPR135-5183H Lot. No. (See product label)

SPECIFICATION

Product Overview	Human GPR135 partial ORF (NP_072093, 391 a.a. - 493 a.a.) recombinant protein with GST-tag at N-terminal.
Species	Human
Source	Wheat Germ
Description	GPR135 (G Protein-Coupled Receptor 135) is a Protein Coding gene. Among its related pathways are GPCRs, Other. GO annotations related to this gene include G-protein coupled receptor activity. An important paralog of this gene is GPR45.
Molecular Mass	37.07 kDa
AA Sequence	NPNISMLLGRNREEGYRTRNVDAFLPSQGPGGLQARSRSRLRNRYANRLGACNRMS SSNPASGVAGDVAMWARKNPVVLFCREGPPEPVTAVTKQPKSEAGDTS
Applications	Enzyme-linked Immunoabsorbent Assay Western Blot (Recombinant protein) Antibody Production Protein Array
Notes	Best use within three months from the date of receipt of this protein.
Storage	Store at -80 centigrade. Aliquot to avoid repeated freezing and thawing.

 Tel: 1-631-559-9269 1-516-512-3133

 Email: info@creative-biomart.com  Fax: 1-631-938-8127

 45-1 Ramsey Road, Shirley, NY 11967, USA

Storage Buffer 50 mM Tris-HCl, 10 mM reduced Glutathione, pH=8.0 in the elution buffer.

GENE INFORMATION

Gene Name GPR135 G protein-coupled receptor 135 [Homo sapiens (human)]

Official Symbol GPR135

Synonyms GPR135; G protein-coupled receptor 135; HUMNP11Y20; probable G-protein coupled receptor 135

Gene ID 64582

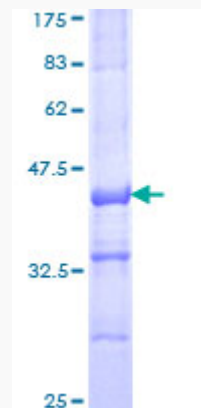
mRNA Refseq NM_022571

Protein Refseq NP_072093

MIM 607970

UniProt ID Q8IZ08

Quality Control Testing



 Tel: 1-631-559-9269 1-516-512-3133

 Email: info@creative-biomart.com  Fax: 1-631-938-8127

 45-1 Ramsey Road, Shirley, NY 11967, USA



12.5% SDS-PAGE Stained with Coomassie Blue.

 Tel: 1-631-559-9269 1-516-512-3133

 Email: info@creative-biomart.com  Fax: 1-631-938-8127

 45-1 Ramsey Road, Shirley, NY 11967, USA