

Recombinant Human GPR141 Protein, Myc/DDK-tagged, C13 and N15-labeled

Cat. No. GPR141-2091H **Lot. No.** (See product label)

SPECIFICATION

Product Overview	GPR141 MS Standard C13 and N15-labeled recombinant protein (NP_861456) with a C-terminal MYC/DDK tag, was expressed in HEK293 cells.
Species	Human
Source	HEK293
Description	GPR141 is a member of the rhodopsin family of G protein-coupled receptors (GPRs).
Molecular Mass	35.3 kDa
AA Sequence	MPGHNTRNSSCDPIVTPHLISLYFIVLIGGLVGVISILFLLVKMNTRSVTTMAVINLVV VHSVLLTVPFRLTYLIKKTWMFGLPFCKFVSAMLIHMYLTFLFYVVILVTRYLIFFKC KDKVEFYRKLHAVAASAGMWTLVIVIVVPLVVSRYGIHEEYNEEHCFKFKHKLAYTYV KIINYMIVIFVIAVAVILLVFQVFIIMLMVQKLRHSLLSHQEFWAQLKNLFFIGVILVCFLP YQFFRIYYLNVVTHSNACNSKVAFYNEIFLSVTAISCYDLLLLFVGGSHWFKQKIIGLW NCVLCRTRTRPLEQKLISEEDLAANDILDYKDDDDKV
Purity	> 80% as determined by SDS-PAGE and Coomassie blue staining
Stability	Stable for 3 months from receipt of products under proper storage and handling conditions.
Storage	Store at -80 centigrade. Avoid repeated freeze-thaw cycles.

 Tel: 1-631-559-9269 1-516-512-3133

 Email: info@creative-biomart.com  Fax: 1-631-938-8127

 45-1 Ramsey Road, Shirley, NY 11967, USA

Concentration 50 µg/mL as determined by BCA

Storage Buffer 100 mM glycine, 25 mM Tris-HCl, pH 7.3.

GENE INFORMATION

Gene Name GPR141 G protein-coupled receptor 141 [Homo sapiens (human)]

Official Symbol GPR141

Synonyms GPR141; G protein-coupled receptor 141; PGR13; probable G-protein coupled receptor 141; G-protein coupled receptor PGR13

Gene ID 353345

mRNA Refseq NM_181791

Protein Refseq NP_861456

MIM 609045

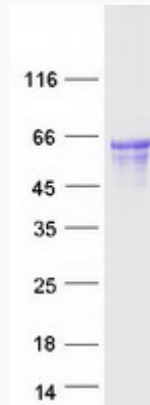
UniProt ID Q7Z602

 Tel: 1-631-559-9269 1-516-512-3133

 Email: info@creative-biomart.com  Fax: 1-631-938-8127

 45-1 Ramsey Road, Shirley, NY 11967, USA

SDS-PAGE



 Tel: 1-631-559-9269 1-516-512-3133

 Email: info@creative-biomart.com  Fax: 1-631-938-8127

 45-1 Ramsey Road, Shirley, NY 11967, USA