

Recombinant Human GPR143 Protein, GST-tagged

Cat. No. GPR143-5189H Lot. No. (See product label)

SPECIFICATION

Product Overview	Human GPR143 full-length ORF (NP_000264.1, 1 a.a. - 424 a.a.) recombinant protein with GST-tag at N-terminal.
Species	Human
Source	Wheat Germ
Description	Ocular albinism type 1 protein is a conserved integral membrane protein with seven transmembrane domains. It is expressed in the eye and epidermal melanocytes. [provided by RefSeq]
Molecular Mass	72.5 kDa
AA Sequence	<p>MTQAGRRGPGTPEPRPRTQPMASPRLGTFCCPTRDAATQLVLSFQPRAFHALCLG SGGLRLALGLLQLLPGRRPAGPGSPATSPASVRILRAAAACDLLGCLGMVIRSTVW LGFPNFVDSVSDMNHTEIWPAAFVGSAMWIQLLYSACFWWLFCYAVDAYLVIRRS AGLSTILLYHIMAWGLATLLCVEGAAMLYPSVSR CERGLDHAIPHYVTMYLPLLLVL VANPILFQKTVTAVASLLKGRQGIYTENERRMGAVIKIRFFKIMLVLIICWLSNIINESLL FYLEMQTDINGGSLKPVRTAAKTTWFIMGILNPAQGFLLSLAFYGWTGCSLGFQSPR KEIQWESLTTSAE GAHPSPLMPHENPASGKVSQVGGQTSDEALSMLSEGSDASTI EIHTASESCNKNEGDPALPTHGDL</p>
Applications	Enzyme-linked Immunoabsorbent Assay Western Blot (Recombinant protein) Antibody Production

 Tel: 1-631-559-9269 1-516-512-3133

 Email: info@creative-biomart.com  Fax: 1-631-938-8127

 45-1 Ramsey Road, Shirley, NY 11967, USA

Protein Array

Notes	Best use within three months from the date of receipt of this protein.
Storage	Store at -80 centigrade. Aliquot to avoid repeated freezing and thawing.
Storage Buffer	50 mM Tris-HCl, 10 mM reduced Glutathione, pH=8.0 in the elution buffer.

GENE INFORMATION

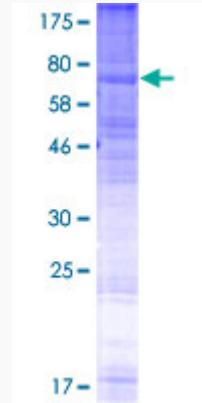
Gene Name	GPR143 G protein-coupled receptor 143 [Homo sapiens]
Official Symbol	GPR143
Synonyms	GPR143; G protein-coupled receptor 143; OA1, ocular albinism 1 (Nettleship Falls); G-protein coupled receptor 143; ocular albinism 1 (Nettleship Falls); ocular albinism type 1 protein; OA1; NYS6;
Gene ID	4935
mRNA Refseq	NM_000273
Protein Refseq	NP_000264
MIM	300808
UniProt ID	P51810

 Tel: 1-631-559-9269 1-516-512-3133

 Email: info@creative-biomart.com  Fax: 1-631-938-8127

 45-1 Ramsey Road, Shirley, NY 11967, USA

**Quality Control
Testing**



12.5% SDS-PAGE Stained with Coomassie Blue.

 Tel: 1-631-559-9269 1-516-512-3133

 Email: info@creative-biomart.com  Fax: 1-631-938-8127

 45-1 Ramsey Road, Shirley, NY 11967, USA