

# Recombinant Human GPR146 Full Length Transmembrane protein, His-tagged

**Cat. No.** GPR146-1485H    **Lot. No.** (See product label)

## SPECIFICATION

<b>Product Overview</b>	Recombinant Human GPR146 protein(Q96CH1)(1-333aa), fused to N-terminal His tag, was expressed in E. coli.
<b>Species</b>	Human
<b>Source</b>	E.coli
<b>ProteinLength</b>	1-333aa
<b>Form</b>	If the delivery form is liquid, the default storage buffer is Tris/PBS-based buffer, 5%-50% glycerol. If the delivery form is lyophilized powder, the buffer before lyophilization is Tris/PBS-based buffer, 6% Trehalose, pH 8.0.
<b>Molecular Mass</b>	39.4 kDa
<b>AA Sequence</b>	MWSCSWFNGTGLVEELPACQDLQLGLSLLSLLGLVVGVPVGLCYNALLVLANLHSK ASMTMPDVYFVNMAVAGLVLSALAPVHLLGPPSSRWALWSVGGEVHVALQIPFNVS SLVAMYSTALLSLDHYIERALPRTYMASVYNTRHVCGFVWGGALLTSFSSLLFYICSH VSTRALECAKMQNAEAADATLVFIGYVVPALATLYALVLLSRVRREDTPLDRDTGRL EPSAHRLLVATVCTQFGLWTPHYLILLGHTVIIISRGKPVDAHYLGLLHFVKDFSKLLAF SSSFVTPLLYRYMNSFPSKLQRLMKKLPCGDRHCSPDHMGVQQVLA
<b>Purity</b>	Greater than 90% as determined by SDS-PAGE.

 Tel: 1-631-559-9269    1-516-512-3133

 Email: [info@creative-biomart.com](mailto:info@creative-biomart.com)     Fax: 1-631-938-8127

 45-1 Ramsey Road, Shirley, NY 11967, USA

<b>Storage</b>	Store at -20°C/-80°C upon receipt, aliquoting is necessary for mutiple use. Avoid repeated freeze-thaw cycles.
<b>Reconstitution</b>	Please reconstitute protein in deionized sterile water to a concentration of 0.1-1.0 mg/mL. We recommend to add 5-50% of glycerol (final concentration) and aliquot for long-term storage at -20°C/-80°C. Our default final concentration of glycerol is 50%.

## GENE INFORMATION

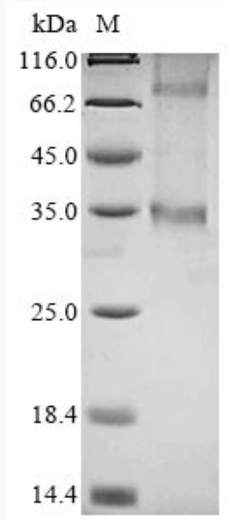
<b>Gene Name</b>	GPR146 G protein-coupled receptor 146 [ Homo sapiens ]
<b>Official Symbol</b>	GPR146
<b>Synonyms</b>	GPR146; G protein-coupled receptor 146; probable G-protein coupled receptor 146; PGR8; G protein-coupled receptor PGR8; G-protein coupled receptor PGR8;
<b>Gene ID</b>	115330
<b>mRNA Refseq</b>	NM_138445
<b>Protein Refseq</b>	NP_612454
<b>UniProt ID</b>	Q96CH1

 Tel: 1-631-559-9269 1-516-512-3133

 Email: [info@creative-biomart.com](mailto:info@creative-biomart.com)  Fax: 1-631-938-8127

 45-1 Ramsey Road, Shirley, NY 11967, USA

**SDS-PAGE**



 Tel: 1-631-559-9269 1-516-512-3133

 Email: [info@creative-biomart.com](mailto:info@creative-biomart.com)  Fax: 1-631-938-8127

 45-1 Ramsey Road, Shirley, NY 11967, USA