

Recombinant Human GPR149 Protein, Myc/DDK-tagged, C13 and N15-labeled

Cat. No. GPR149-5553H **Lot. No.** (See product label)

SPECIFICATION

Product Overview GPR149 MS Standard C13 and N15-labeled recombinant protein (NP_001033794) with a C-terminal MYC/DDK tag, was expressed in HEK293 cells.

Species Human

Source HEK293

Description

This gene encodes a seven-transmembrane G protein coupled receptor (GPCR) class A family member. Although categorized as a class A GPCR, the encoded protein lacks the first two charged amino acids of the highly conserved Asp-Arg-Tyr (DRY) motif found in the third transmembrane helix of class A receptors which is important for efficient G protein-coupled signal transduction. Mice with a knockout of the orthologous gene are viable and have normal maturation of the ovarian follicle, but show enhanced fertility and ovulation. All GPCRs have a common structural architecture consisting of seven transmembrane alpha-helices interconnected by three extracellular and three intracellular loops. A general feature of GPCR signaling is agonist-induced conformational changes in the receptor, leading to activation of the heterotrimeric G proteins, which consist of the guanine nucleotide-binding G-alpha subunit and the dimeric G-beta-gamma subunits. The activated G proteins then bind to and activate numerous downstream effector proteins, which generate second messengers that mediate a broad range of cellular and physiological processes.

Molecular Mass 80.8 kDa

 Tel: 1-631-559-9269 1-516-512-3133

 Email: info@creative-biomart.com  Fax: 1-631-938-8127

 45-1 Ramsey Road, Shirley, NY 11967, USA

AA Sequence

MSLFLSNLSTNDSSLWKENHNSTDLLNPPGTLNIYLFCLTCLMTFAALVGSISLISLL
 KMQNRTVVSMLVASWSVDDLMSVLSVTIFMFLQWPNEVPGYFQFLCTTSALMYLC
 QGLSSNLKATLLVSYNFYTMHRGVGSQTASRRSGQVLGVVLTVWAASLLLSALPLC
 GWGAFVRTPWGCLVDCSSSYVFLSIVYALAFGLLVGLSVPLTHRLLCSEEPRLHS
 NYQEISRGASIPGTPPTAGRVSLSPEDAPGPSLRRSGGCSPSSDTVFGPGAPAAA
 GAEACRRENRTLYGTRSFTVSVAQKRFA LILALTKVVLWLPMMMHHMVVQNVVGF
 QSLPLETFSFLLTLLATTVTPVFVLSKRWTHLPCGCIINCRQNAYAVASDGKKIKRKG
 FEFNLSFQKSYGIYKIAHEDYYDDDENISFYHNLNMNSECETT KDPQRDNRNIFNAIKV
 EISTTPSLDSSTQRGINKCTNTDITEAKQDSNNKKDAFSDKTGGDINYEETTFSEGPE
 RRLSHEESQKPDLSDWEWCRSKSERTPRQRSGYALAIPLCAFQGTVSLHAPTGKTL
 SLSTYEVSAEGQKITPASKKIEVYRSKSVGHEPNSEDSSSTFVDTSVKIHLEVLEICDN
 EEALDTVSIISNISQSSTQVRSPSLRYSRKENRFVSCDLGETASYSLFLPTSNDGDI
 NISIPDTVEAHRQNSKRQHQRDGYQEEIQLLNKAYRKREEESKGSTRTTRPLEQKLI
 SEEDLAANDILDYKDDDDKV

Purity

> 80% as determined by SDS-PAGE and Coomassie blue staining

Stability

Stable for 3 months from receipt of products under proper storage and handling conditions.

Storage

Store at -80 centigrade. Avoid repeated freeze-thaw cycles.

Concentration

50 µg/mL as determined by BCA

Storage Buffer

100 mM glycine, 25 mM Tris-HCl, pH 7.3.

GENE INFORMATION
Gene Name

GPR149 G protein-coupled receptor 149 [Homo sapiens (human)]

Official Symbol

GPR149

 Tel: 1-631-559-9269 1-516-512-3133

 Email: info@creative-biomart.com  Fax: 1-631-938-8127

 45-1 Ramsey Road, Shirley, NY 11967, USA

Synonyms GPR149; G protein-coupled receptor 149; probable G-protein coupled receptor 149; IEDA; PGR10; G protein-coupled receptor PGR10; G-protein coupled receptor PGR10;

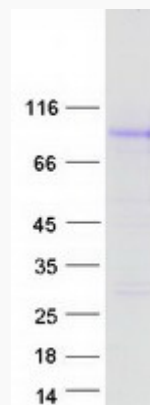
Gene ID [344758](#)

mRNA Refseq [NM_001038705](#)

Protein Refseq [NP_001033794](#)

UniProt ID [Q86SP6](#)

SDS-PAGE



 Tel: 1-631-559-9269 1-516-512-3133

 Email: info@creative-biomart.com  Fax: 1-631-938-8127

 45-1 Ramsey Road, Shirley, NY 11967, USA