

Recombinant Human GPR15 Full Length Transmembrane protein, His-tagged

Cat. No. GPR15-710H Lot. No. (See product label)

SPECIFICATION

Product Overview	Recombinant Human GPR15 protein(P49685)(1-360aa), fused with N-terminal His tag, was expressed in in vitro E. coli expression system.
Species	Human
Source	E.coli
ProteinLength	1-360aa
Form	If the delivery form is liquid, the default storage buffer is Tris/PBS-based buffer, 5%-50% glycerol. If the delivery form is lyophilized powder, the buffer before lyophilization is Tris/PBS-based buffer, 6% Trehalose, pH 8.0.
Molecular Mass	43.6 kDa
AA Sequence	MDPEETSVYLDYYYATSPNSDIRETHSHVPYTSVFLPVFYTAVFLTGVLGNLVLMGA LHFKPGSRRLIDIFIINLAASDFIFLVTLPLWVDKEASLGLWRTGSFLCKGSSYMSVN MHCSVLLLTCMSVDRYLAIVWPVVSRRKFRRTDCAYVVCASIWFISSCLLGLPTLLSREL TLIDDKPYCAEKKATPIKLIWLSLVALIFFVPLLSIVTCYCCIARKLCAHYQQSGKHNK KLKKSIIIFIVVAAFLVSWLPFNTFKFLAIVSGLRQEHYLP SAILQLGMEVSGPLAFAN SCVNPFIIYYIFDSYIRRAIVHCLCPCLKNYDFGSSSTETSDSHLTKALSTFIHAEDFARR RKRSVSL

 Tel: 1-631-559-9269 1-516-512-3133

 Email: info@creative-biomart.com  Fax: 1-631-938-8127

 45-1 Ramsey Road, Shirley, NY 11967, USA

Purity	Greater than 85% as determined by SDS-PAGE.
Storage	Store at -20°C/-80°C upon receipt, aliquoting is necessary for mutiple use. Avoid repeated freeze-thaw cycles.
Reconstitution	Please reconstitute protein in deionized sterile water to a concentration of 0.1-1.0 mg/mL. We recommend to add 5-50% of glycerol (final concentration) and aliquot for long-term storage at -20°C/-80°C.

GENE INFORMATION

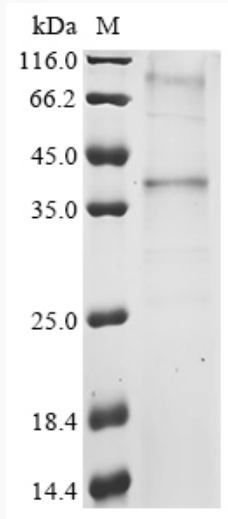
Gene Name	GPR15 G protein-coupled receptor 15 [Homo sapiens]
Official Symbol	GPR15
Synonyms	GPR15; G protein-coupled receptor 15; G-protein coupled receptor 15; BOB; brother of Bonzo; MGC126828; MGC126830;
Gene ID	2838
mRNA Refseq	NM_005290
Protein Refseq	NP_005281
MIM	601166
UniProt ID	P49685

 Tel: 1-631-559-9269 1-516-512-3133

 Email: info@creative-biomart.com  Fax: 1-631-938-8127

 45-1 Ramsey Road, Shirley, NY 11967, USA

SDS-PAGE



 Tel: 1-631-559-9269 1-516-512-3133

 Email: info@creative-biomart.com  Fax: 1-631-938-8127

 45-1 Ramsey Road, Shirley, NY 11967, USA