

# Recombinant Human GPR150 Protein, Myc/DDK-tagged, C13 and N15-labeled

**Cat. No.** GPR150-2527H    **Lot. No.** (See product label)

## SPECIFICATION

### Product Overview

GPR150 MS Standard C13 and N15-labeled recombinant protein (NP\_954713) with a C-terminal MYC/DDK tag, was expressed in HEK293 cells.

### Species

Human

### Source

HEK293

### Description

This gene encodes an orphan member of the class A rhodopsin-like family of G-protein-coupled receptors (GPCRs). Within the rhodopsin-like family, this gene is a member of the vasopressin-like subfamily that also includes vasopressin and oxytocin receptors. The silencing of this gene, due to promoter methylation, is associated with ovarian cancer progression. All GPCRs have a transmembrane domain that includes seven transmembrane alpha-helices. A general feature of GPCR signaling is the agonist-induced conformational change in the receptor, leading to activation of the heterotrimeric G protein. The activated G protein then binds to and activates numerous downstream effector proteins, which generate second messengers that mediate a broad range of cellular and physiological processes.

### Molecular Mass

46.2 kDa

### AA Sequence

MEDLFSPSILPPAPNISVPILLGWGLNLTGQGAPASGPPSRRVRLVFLGVILVVAVA  
GNTTVLCRLCGGGGPWAGPKRRKMDFLLVQLALADLYACGGTALSQLAWELLGEP  
RAATGDLACRFLQLLQASGRGASAHLVVLIALERRRRAVRLPHGRPLPARALAALGWL

 Tel: 1-631-559-9269    1-516-512-3133

 Email: [info@creative-biomart.com](mailto:info@creative-biomart.com)     Fax: 1-631-938-8127

 45-1 Ramsey Road, Shirley, NY 11967, USA

LALLLALPPAFVVRGDSPSPLPPPPPTSLQPGAPPAARAWPGERRCHGIFAPLPR  
 WHLQVYAFYEAVAGFVAPVTVLGVACGHLLSVWWRHRPQAPAAAAPWSASPGRA  
 PAPSALPRAKVQSLKMSLLLALLFVGCELPYFAARLAAAWSSGPAGDWEGEGLSAA  
 LRVVAMANSALNPFVYLFFQAGDCRLRRQLRKRLGSLCCAPQGGAEDEEGPRGHQ  
 ALYRQRWPHPHYHHARREPLDEGGLRPPPPRPRPLPCSCESAFSGPTRTRRLEQK  
 LISEEDLAANDILDYKDDDDKV

<b>Purity</b>	> 80% as determined by SDS-PAGE and Coomassie blue staining
<b>Stability</b>	Stable for 3 months from receipt of products under proper storage and handling conditions.
<b>Storage</b>	Store at -80 centigrade. Avoid repeated freeze-thaw cycles.
<b>Concentration</b>	50 µg/mL as determined by BCA
<b>Storage Buffer</b>	100 mM glycine, 25 mM Tris-HCl, pH 7.3.

## GENE INFORMATION

<b>Gene Name</b>	GPR150 G protein-coupled receptor 150 [ Homo sapiens (human) ]
<b>Official Symbol</b>	GPR150
<b>Synonyms</b>	GPR150; G protein-coupled receptor 150; probable G-protein coupled receptor 150; PGR11; seven transmembrane helix receptor;
<b>Gene ID</b>	285601
<b>mRNA Refseq</b>	NM_199243

 Tel: 1-631-559-9269 1-516-512-3133

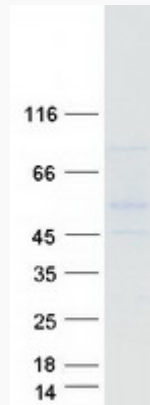
 Email: [info@creative-biomart.com](mailto:info@creative-biomart.com)  Fax: 1-631-938-8127

 45-1 Ramsey Road, Shirley, NY 11967, USA

**Protein Refseq**      NP\_954713

**UniProt ID**          Q8NGU9

**SDS-PAGE**



 Tel: 1-631-559-9269    1-516-512-3133

 Email: [info@creative-biomart.com](mailto:info@creative-biomart.com)     Fax: 1-631-938-8127

 45-1 Ramsey Road, Shirley, NY 11967, USA