

## Recombinant Human GPR151 Protein, GST-tagged

**Cat. No.** GPR151-5195H    **Lot. No.** (See product label)

### SPECIFICATION

<b>Product Overview</b>	Human GPR151 full-length ORF ( NP_919227.2, 1 a.a. - 419 a.a.) recombinant protein with GST-tag at N-terminal.
<b>Species</b>	Human
<b>Source</b>	Wheat Germ
<b>Description</b>	The protein encoded by this gene is similar to the galanin receptor subfamily of G protein-coupled receptors. The encoded protein is found predominantly in the central nervous system. [provided by RefSeq, Feb 2017]
<b>Molecular Mass</b>	73 kDa
<b>AA Sequence</b>	MLAAAFADSNSSSMNVSF AHLHFAGGYLP SDSQDWRTIIPALLVAVCLVGFVGNLCV IGILLHNAWK GKPSMIHSLILNLSLADLSLLLFSAPIRATAYS KSVWDLGWVCKSSD WFIHTCMAAKSLTIVVAKVCFMYASDP AKQVSIHNYTIWSVLVAIWTVASLLPLPEW FFSTIRHHEGVEMCLVDVPAVAEEFMSMFGKLYPLLA FGLPLFFASFYFWRAYDQC KKRGTKTQNLRNQIRSKQVTVMLLSIAIISALLWLPEWVAWLWWHLKAAGPAPPQ GFIALSQVLMFSISSANPLIFLVMSEEFREGLKGVWKWMITKKPPTVSESQETPAGN SEGLPDKVPSPEPASPEKEKPS SPSSGKGKTEKAEIPLPDVEQFWHERDTVPSV QDNDPIPWEHEDQETGEGVK
<b>Applications</b>	Enzyme-linked Immunoabsorbent Assay Western Blot (Recombinant protein) Antibody Production

 Tel: 1-631-559-9269    1-516-512-3133

 Email: [info@creative-biomart.com](mailto:info@creative-biomart.com)     Fax: 1-631-938-8127

 45-1 Ramsey Road, Shirley, NY 11967, USA

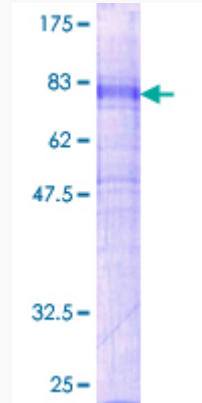
	Protein Array
<b>Notes</b>	Best use within three months from the date of receipt of this protein.
<b>Storage</b>	Store at -80 centigrade. Aliquot to avoid repeated freezing and thawing.
<b>Storage Buffer</b>	50 mM Tris-HCl, 10 mM reduced Glutathione, pH=8.0 in the elution buffer.
<b>GENE INFORMATION</b>	
<b>Gene Name</b>	<a href="#">GPR151 G protein-coupled receptor 151 [ Homo sapiens ]</a>
<b>Official Symbol</b>	<a href="#">GPR151</a>
<b>Synonyms</b>	GPR151; G protein-coupled receptor 151; probable G-protein coupled receptor 151; galanin receptor 4; GALR4; PGR7; GPCR-2037; G-protein coupled receptor PGR7; putative G-protein coupled receptor; GPCR; GALRL;
<b>Gene ID</b>	<a href="#">134391</a>
<b>mRNA Refseq</b>	<a href="#">NM_194251</a>
<b>Protein Refseq</b>	<a href="#">NP_919227</a>
<b>UniProt ID</b>	<a href="#">Q8TDV0</a>

 Tel: 1-631-559-9269 1-516-512-3133

 Email: [info@creative-biomart.com](mailto:info@creative-biomart.com)  Fax: 1-631-938-8127

 45-1 Ramsey Road, Shirley, NY 11967, USA

**Quality Control  
Testing**



12.5% SDS-PAGE Stained with Coomassie Blue.

 Tel: 1-631-559-9269 1-516-512-3133

 Email: [info@creative-biomart.com](mailto:info@creative-biomart.com)  Fax: 1-631-938-8127

 45-1 Ramsey Road, Shirley, NY 11967, USA