

## Recombinant Human GPR155 Protein, GST-tagged

Cat. No. GPR155-5198H Lot. No. (See product label)

### SPECIFICATION

<b>Product Overview</b>	Human GPR155 full-length ORF ( AAH28730.1, 1 a.a. - 870 a.a.) recombinant protein with GST-tag at N-terminal.
<b>Species</b>	Human
<b>Source</b>	Wheat Germ
<b>Description</b>	GPR155 (G Protein-Coupled Receptor 155) is a Protein Coding gene.
<b>Molecular Mass</b>	123.4 kDa
<b>AA Sequence</b>	<p>MNSNLP AENLTI AVNMTK LPTAV THGFNSTNDPPSMSITRLFPALLECFGIVLCGYIA  GRANVITSTQAKGLGNFVSRFALPALLFKNMVVLNFSNVDWSFLYSILIAKASVFFIVC  VLTL LVASPD SRFSKAGLFP I FATQSNDFALGYPIVEALYQTTYPEYLQYIYLVAPISLM  MLNPIGFIFCEIQKWEDTQNASQNKIKIVGLGLLRVLQNPVFMVFIGIAFNFILDRKVP  VYVENFLDGLGNSFSGSALFYLG LTMV GKIKRLKKS AFVVLILLITAKLLVLP L LCREM  VELLDKGDSVVNHTSLSNYAFLYGVFPVAPGVAIFATQFNMEVEIITSGMVISTFVSA  PIMYVSAWLLTFPTMDPKPLAYAIQNVSFDISIVSLISLIWLSLA I L LSKKYKQLPHMLTT  NLLIAQSIVCAGMMIWNFVKEKNFVGQILVFVLLYSSLYSTYLWTGLLAISLFL LKRE  RVQIPVGI I I I I SGWGIPALLVGVLLITGKHNGDSIDSAFFYGKEQM ITTAVTLFCSILIAGI  SLMCMNQTAQAGGYEGFDQSQSHKVV EPGNTAFEE SPAPVNEPELFTSSIPETSCC  SCSMGNGELHCPSIEPIANTSTSEPVIPSF EKNNHCVSR CNSQSCILAQEEEQYLQS  GDQQLTRHVLLCLLLIIGLFANLYSCLWWLFNQEPGRLYVELQFFCAVFNFGQGFISF  GIFGLDKHLIILPFKRRLEFLWNNKDTAENRDSPVSEEIKMTCQQFIHYHRDL CIRNIV</p>

Tel: 1-631-559-9269 1-516-512-3133

Email: [info@creative-biomart.com](mailto:info@creative-biomart.com) Fax: 1-631-938-8127

45-1 Ramsey Road, Shirley, NY 11967, USA

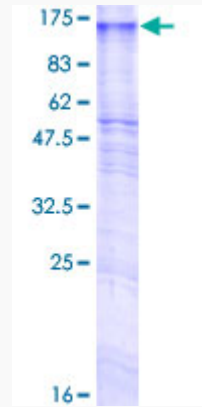
KERRCGAKTSAGTFCGCDLVSWLIEVGLASDRGEAVIYGDRLVQGGVIQHITNEYEF  
RDEYLFYRFLQKSPEQSPAINANTLQQERYKEIEHSSPPSHSPKT

<b>Applications</b>	Enzyme-linked Immunoabsorbent Assay Western Blot (Recombinant protein) Antibody Production Protein Array
<b>Notes</b>	Best use within three months from the date of receipt of this protein.
<b>Storage</b>	Store at -80 centigrade. Aliquot to avoid repeated freezing and thawing.
<b>Storage Buffer</b>	50 mM Tris-HCl, 10 mM reduced Glutathione, pH=8.0 in the elution buffer.

## GENE INFORMATION

<b>Gene Name</b>	GPR155 G protein-coupled receptor 155 [ Homo sapiens ]
<b>Official Symbol</b>	GPR155
<b>Synonyms</b>	DEP.7; PGR22; DEPDC3; GPR155; G protein-coupled receptor 155
<b>Gene ID</b>	151556
<b>mRNA Refseq</b>	NM_152529
<b>Protein Refseq</b>	NP_689742
<b>UniProt ID</b>	Q7Z3F1

**Quality Control  
Testing**



12.5% SDS-PAGE Stained with Coomassie Blue.

 Tel: 1-631-559-9269 1-516-512-3133

 Email: [info@creative-biomart.com](mailto:info@creative-biomart.com)  Fax: 1-631-938-8127

 45-1 Ramsey Road, Shirley, NY 11967, USA