

Recombinant Human GPR157 Full Length Transmembrane protein (1-335 aa), His-tagged

Cat. No. GPR157-2729H Lot. No. (See product label)

SPECIFICATION

Product Overview	Recombinant Human GPR157 Protein (1-335 aa) is produced by in vitro E. coli expression system. This protein is fused with a 10xHis tag at the N-terminal.
Species	Human
Source	E.coli
ProteinLength	1-335aa
Form	If the delivery form is liquid, the default storage buffer is Tris/PBS-based buffer, 5%-50% glycerol. If the delivery form is lyophilized powder, the buffer before lyophilization is Tris/PBS-based buffer, 6% Trehalose, pH 8.0.
Molecular Mass	39.4 kDa
AA Sequence	<p>MQPSPPTTELVPSERAVLLSCALSALGSGLLVATHALWPDLRSRARRLLLFLSLAD LLSAASYFYGVLQNFAGPSWDCVLQGalSTFANTSSFFWTVAIALYLYLSIVRAARG PRTDRLLWAFHVVSWSGVPLVITVAVALKKIGYDASDVSVGWCWIDLEAKDHVLWM LLTGKLWEMLAYVLLPLLYLLVRKHINRAHTALSEYRPILSQEHRLLRHSSMADKKLV LIPLIFGLRVWSTVRFVLTLCGSPAVQTPVLVVLHGIGNTFQGGANCIMFVLCTRA VR TRLFSLCCCCSSQPPTKSPAGTPKAPAPSKPGESQESQGTPGELPST</p>
Purity	Greater than 85% as determined by SDS-PAGE.

 Tel: 1-631-559-9269 1-516-512-3133

 Email: info@creative-biomart.com  Fax: 1-631-938-8127

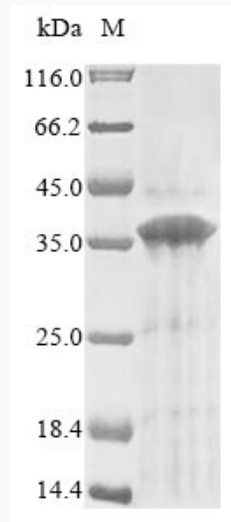
 45-1 Ramsey Road, Shirley, NY 11967, USA

Storage

Store at -20°C/-80°C upon receipt, aliquoting is necessary for multiple use. Avoid repeated freeze-thaw cycles.

Reconstitution

Please reconstitute protein in deionized sterile water to a concentration of 0.1-1.0 mg/mL. We recommend to add 5-50% of glycerol (final concentration) and aliquot for long-term storage at -20°C/-80°C. Our default final concentration of glycerol is 50%.

SDS-PAGE

 Tel: 1-631-559-9269 1-516-512-3133

 Email: info@creative-biomart.com  Fax: 1-631-938-8127

 45-1 Ramsey Road, Shirley, NY 11967, USA