

Recombinant Human GPR157 Protein, GST-tagged

Cat. No. GPR157-5201H **Lot. No.** (See product label)

SPECIFICATION

Product Overview	Human GPR157 full-length ORF (AAH18691, 30 a.a. - 155 a.a.) recombinant protein with GST-tag at N-terminal.
Species	Human
Source	Wheat Germ
Description	GPR157 (G Protein-Coupled Receptor 157) is a Protein Coding gene. Diseases associated with GPR157 include Stromal Dystrophy. GO annotations related to this gene include G-protein coupled receptor activity and transmembrane signaling receptor activity.
Molecular Mass	39.6 kDa
AA Sequence	GLLVATHALWPDLRSRARRLLLFLSLADLLSAASYFYGVQNFAGPSWDCVLQGAL STFANTSSFFWTVAIALYLYLSIVRAARGPRTDRLLWAFHVVRWVAVALLFQEPTQ ADPSRSCPPRGRV
Applications	Enzyme-linked Immunoabsorbent Assay Western Blot (Recombinant protein) Antibody Production Protein Array
Notes	Best use within three months from the date of receipt of this protein.

 Tel: 1-631-559-9269 1-516-512-3133

 Email: info@creative-biomart.com  Fax: 1-631-938-8127

 45-1 Ramsey Road, Shirley, NY 11967, USA

Storage Store at -80 centigrade. Aliquot to avoid repeated freezing and thawing.

Storage Buffer 50 mM Tris-HCl, 10 mM reduced Glutathione, pH=8.0 in the elution buffer.

GENE INFORMATION

Gene Name GPR157 G protein-coupled receptor 157 [Homo sapiens (human)]

Official Symbol GPR157

Synonyms GPR157; G protein-coupled receptor 157; G-protein coupled receptor 157; probable G-protein coupled receptor 157

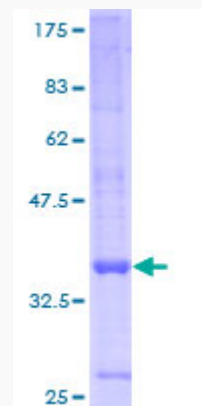
Gene ID 80045

mRNA Refseq NM_024980

Protein Refseq NP_079256

UniProt ID Q5UAW9

Quality Control Testing



 Tel: 1-631-559-9269 1-516-512-3133

 Email: info@creative-biomart.com  Fax: 1-631-938-8127

 45-1 Ramsey Road, Shirley, NY 11967, USA



12.5% SDS-PAGE Stained with Coomassie Blue.

 Tel: 1-631-559-9269 1-516-512-3133

 Email: info@creative-biomart.com  Fax: 1-631-938-8127

 45-1 Ramsey Road, Shirley, NY 11967, USA