

Recombinant Human GPR158 Protein, GST-tagged

Cat. No. GPR158-5202H **Lot. No.** (See product label)

SPECIFICATION

Product Overview	Human GPR158 partial ORF (NP_065803.1, 23 a.a. - 131 a.a.) recombinant protein with GST-tag at N-terminal.
Species	Human
Source	Wheat Germ
Description	GPR158 (G Protein-Coupled Receptor 158) is a Protein Coding gene. Diseases associated with GPR158 include Smallpox and Borderline Glaucoma. GO annotations related to this gene include G-protein coupled receptor activity. An important paralog of this gene is GPR179.
Molecular Mass	37.73 kDa
AA Sequence	RDPQGRPDSPRERTPKGKPHAQQPGRASASDSSAPWSRSTDGTILAQKLAEEVPM DVASYLYTGDSHQLKRANCSGRYELAGLPGKWPALASAHPSLHRALDTLTHATN
Applications	Enzyme-linked Immunoabsorbent Assay Western Blot (Recombinant protein) Antibody Production Protein Array
Notes	Best use within three months from the date of receipt of this protein.
Storage	Store at -80 centigrade. Aliquot to avoid repeated freezing and thawing.

 Tel: 1-631-559-9269 1-516-512-3133

 Email: info@creative-biomart.com  Fax: 1-631-938-8127

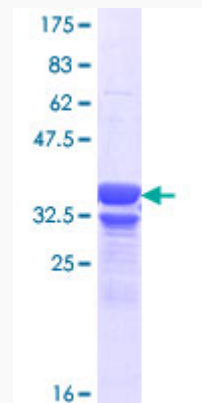
 45-1 Ramsey Road, Shirley, NY 11967, USA

Storage Buffer 50 mM Tris-HCl, 10 mM reduced Glutathione, pH=8.0 in the elution buffer.

GENE INFORMATION

Gene Name	GPR158 G protein-coupled receptor 158 [Homo sapiens (human)]
Official Symbol	GPR158
Synonyms	GPR158; G protein-coupled receptor 158; probable G-protein coupled receptor 158
Gene ID	57512
mRNA Refseq	NM_020752
Protein Refseq	NP_065803
MIM	614573
UniProt ID	Q5T848

Quality Control Testing



12.5% SDS-PAGE Stained with Coomassie Blue.

 Tel: 1-631-559-9269 1-516-512-3133

 Email: info@creative-biomart.com  Fax: 1-631-938-8127

 45-1 Ramsey Road, Shirley, NY 11967, USA