

## Recombinant Human GPR176 Protein, GST-tagged

Cat. No. GPR176-5164H Lot. No. (See product label)

### SPECIFICATION

<b>Product Overview</b>	Human GPR partial ORF ( NP_009154, 416 a.a. - 515 a.a.) recombinant protein with GST-tag at N-terminal.
<b>Species</b>	Human
<b>Source</b>	Wheat Germ
<b>Description</b>	Members of the G protein-coupled receptor family, such as GPR176, are cell surface receptors involved in responses to hormones, growth factors, and neurotransmitters (Hata et al., 1995 [PubMed 7893747]).[supplied by OMIM
<b>Molecular Mass</b>	36.74 kDa
<b>AA Sequence</b>	PQFAPSAPPLSTVDSVSQVAPAAPVEPETFPDKYSLQFGFGPFELPPQWLSETRNS KKRLLPPLGNTPEELIQTKVPKVGRVERKMSRNNKVSIFPKVDS
<b>Applications</b>	Enzyme-linked Immunoabsorbent Assay Western Blot (Recombinant protein) Antibody Production Protein Array
<b>Notes</b>	Best use within three months from the date of receipt of this protein.
<b>Storage</b>	Store at -80 centigrade. Aliquot to avoid repeated freezing and thawing.

 Tel: 1-631-559-9269 1-516-512-3133

 Email: [info@creative-biomart.com](mailto:info@creative-biomart.com)  Fax: 1-631-938-8127

 45-1 Ramsey Road, Shirley, NY 11967, USA

**Storage Buffer** 50 mM Tris-HCl, 10 mM reduced Glutathione, pH=8.0 in the elution buffer.

## GENE INFORMATION

**Gene Name** GPR176 G protein-coupled receptor 176 [ Homo sapiens ]

**Official Symbol** GPR176

**Synonyms** GPR; Gm1012; GPR176; G protein-coupled receptor 176

**Gene ID** 11245

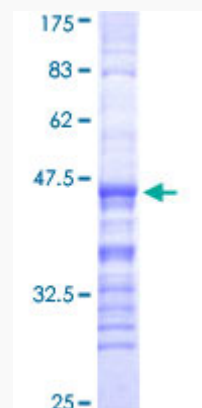
**mRNA Refseq** NM\_007223

**Protein Refseq** NP\_009154

**MIM** 612183

**UniProt ID** Q14439

### Quality Control Testing



12.5% SDS-PAGE Stained with Coomassie Blue.

 Tel: 1-631-559-9269 1-516-512-3133

 Email: [info@creative-biomart.com](mailto:info@creative-biomart.com)  Fax: 1-631-938-8127

 45-1 Ramsey Road, Shirley, NY 11967, USA